

# Polygraph Countermeasures

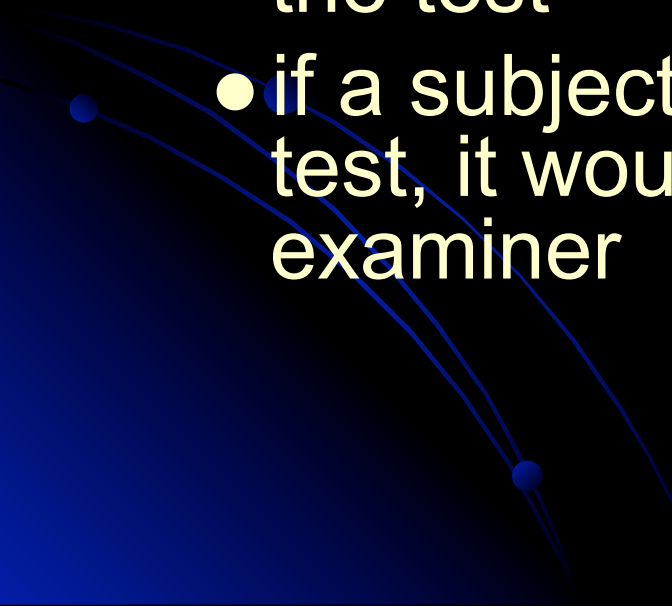
- *Where we were...*
- *Where we are...*

# *True or False?*

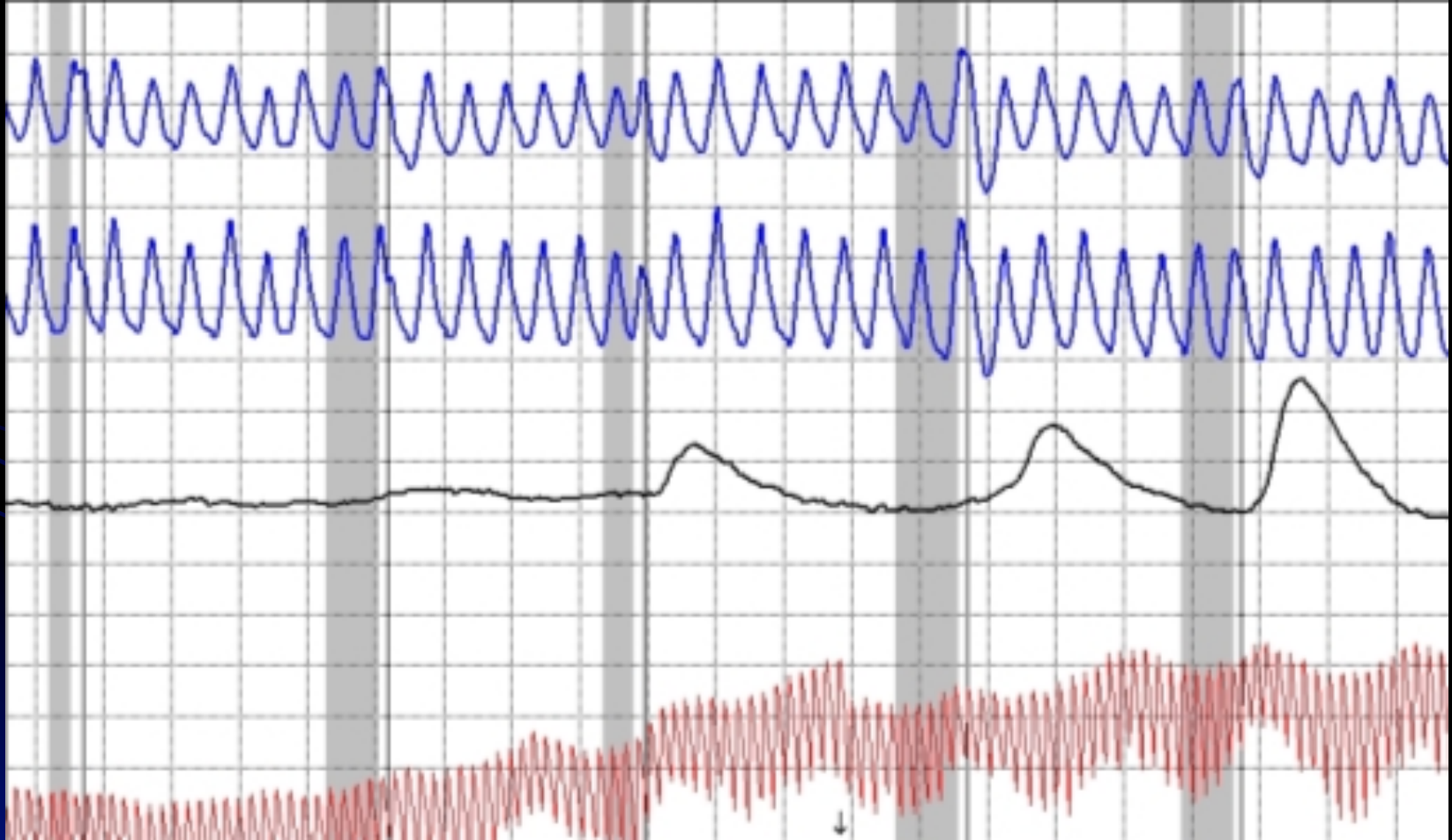
*“...most examiners do not expect skillful countermeasures and, not looking for them, will not see them.”*

Lykken, David T. (1998). *A tremor in the blood: Uses and abuses of the lie detector*. Second Edition, p.275. New York: Plenum Trade

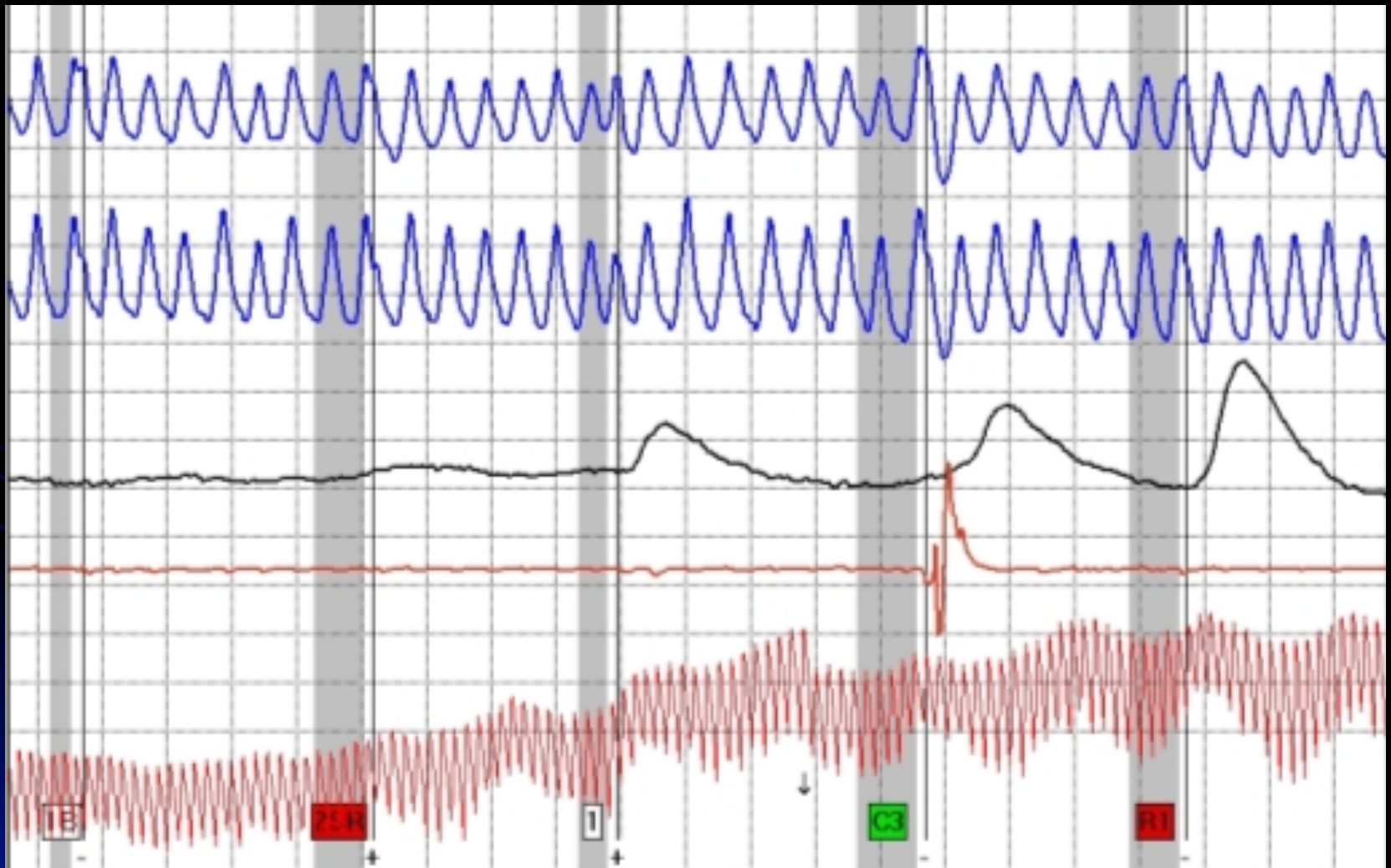
# Once upon a time...

- Some examiners believed (or were told) that:
    - few subjects would attempt to manipulate the test
    - if a subject attempted to manipulate the test, it would be easily recognized by the examiner
- 

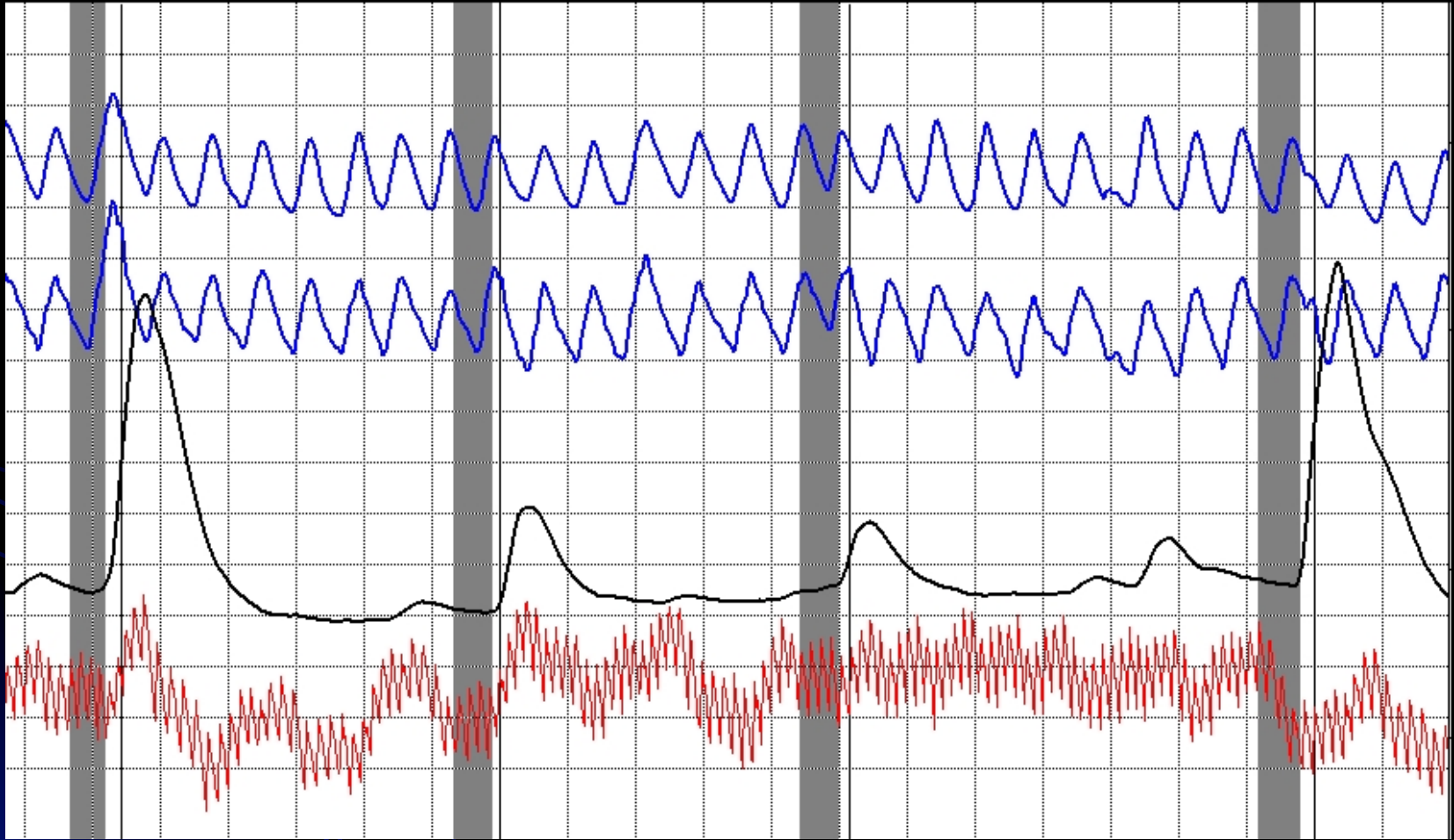
# Really?



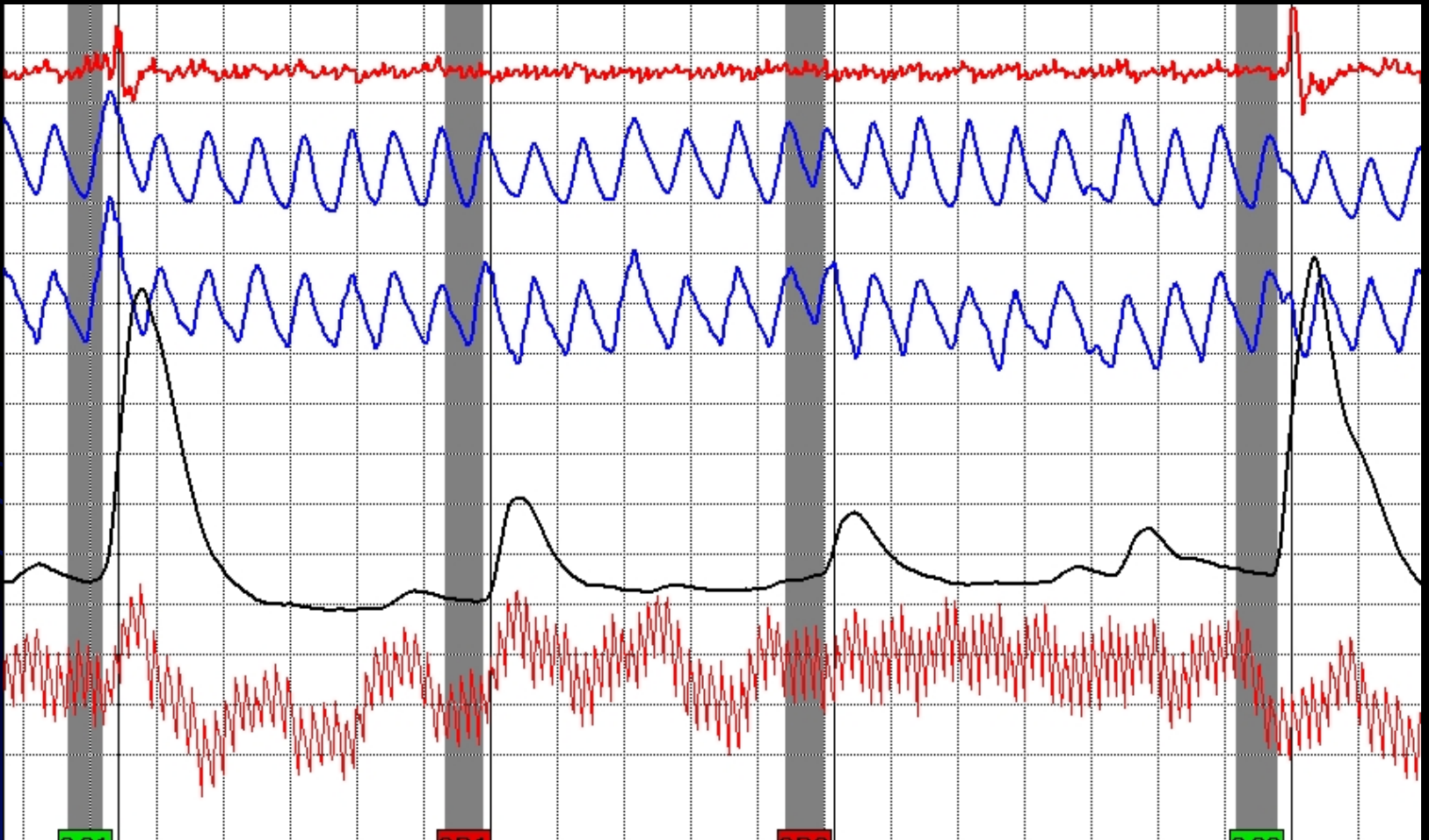
# Another view...



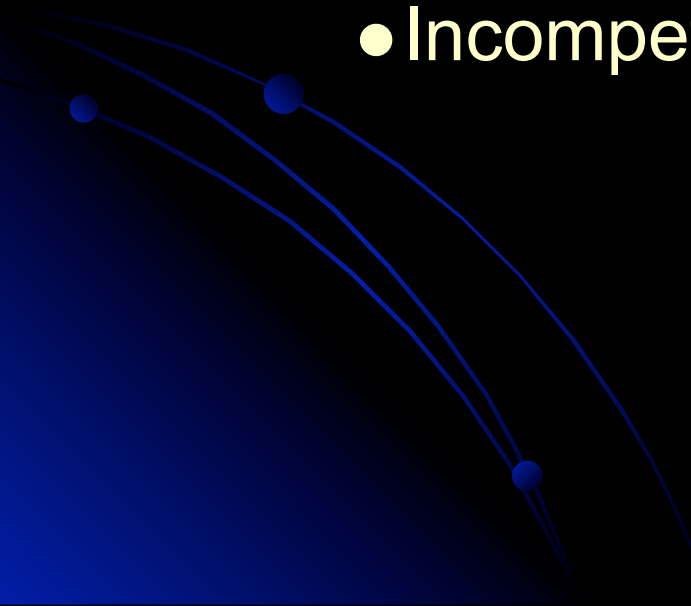
# Acceptable?



# Another view...



# The world has changed...

- Those examiners were:
    - Wrong...and/or...
    - Poorly trained...and/or...
    - Incompetent
- 



# Countermeasures...

## another definition

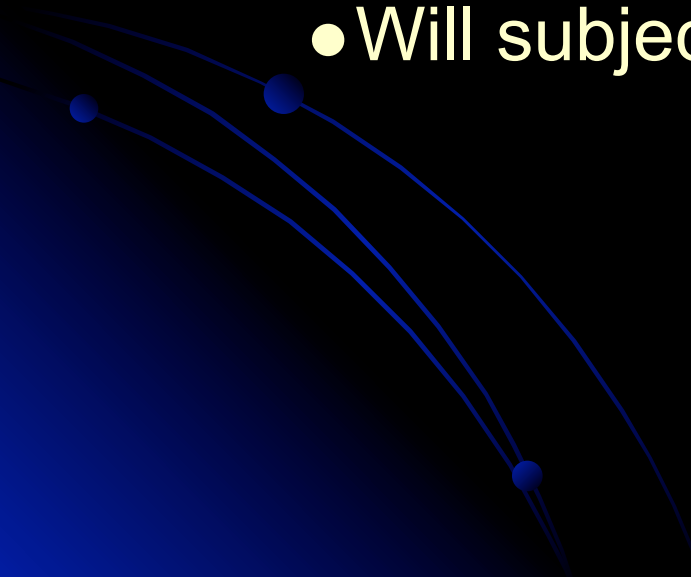
- Any effort to affect the outcome of a polygraph examination through tactical use of:
  - Physical
  - Mental
  - Pharmacological and or
  - Behavioral actions

**It's Deliberate!**

# Does it matter?

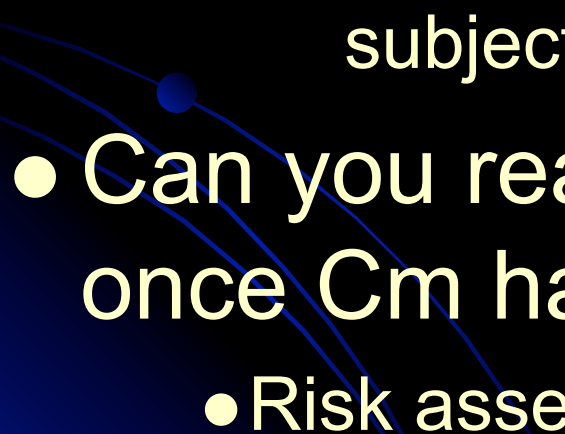
## ...from a countermeasure concern

- Whether subject is guilty?
  - More or less likely to use Cm?
  - Will the Cm look different?
  - Will subject still respond to relevant issue?



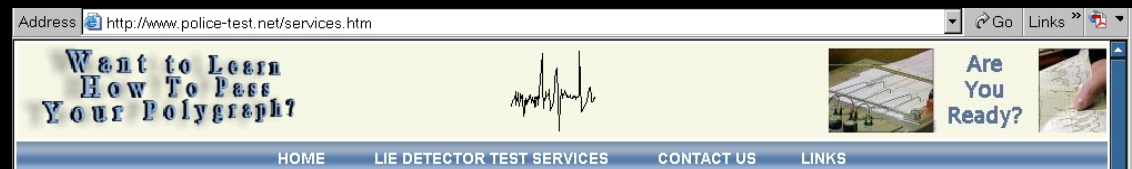
# Does it matter?

...from a countermeasure concern

- Whether subject is innocent?
    - Will innocent subjects use Cm?
    - How will Cm affect examination?
      - Depends on skill sets of examiner and subject!
  - Can you reach an NDI conclusion once Cm have been noted?
    - Risk assessment
- 

# Anti-polygraph sites

- <http://www.polygraph.com>
- <http://www.nopolygraph.com>
- <http://stoppolygraph.com>
- <http://antipolygraph.org>
- <http://www.beatpolygraph.com>
- <http://www.police-test.net>



# Antipolygraph sites advocate:

- Do not submit to a polygraph exam
- If you must take the exam...
  - Use Cm to pass
    - Regardless of guilt or innocence
  - Innocent subjects need to employ Cm to “pass”

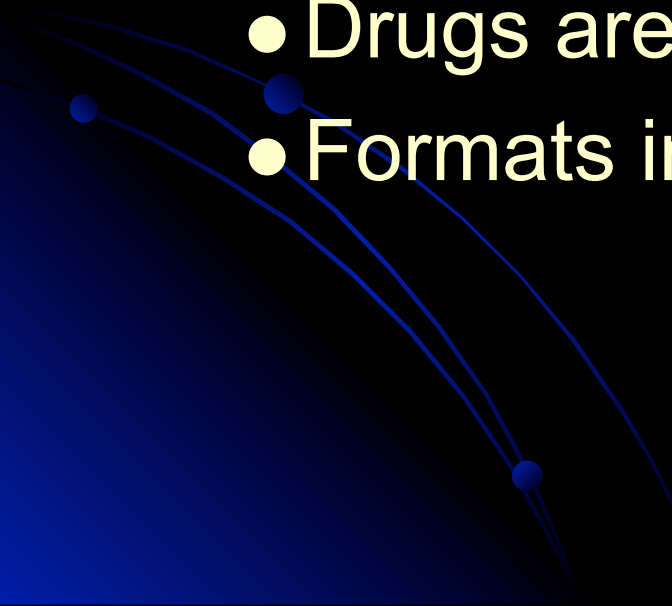
# Protecting the innocent?

“If I were a guilty suspect, I would immediately ...request a polygraph exam and employ countermeasures ... This would be my best hope of diffusing the suspicion ....”

[http://antipolygraph.org/cgi-bin/forums/YaBB.pl?  
board=Policy;action=display;num=1027360333](http://antipolygraph.org/cgi-bin/forums/YaBB.pl?board=Policy;action=display;num=1027360333)

22 Jul 2002

# Antipolygraph sites advocate:

- Use Cm by creating responses
    - At CQs in a comparison test format
    - At RQs in a RI test format
  - Drugs are discouraged
  - Formats in use are explained
- 

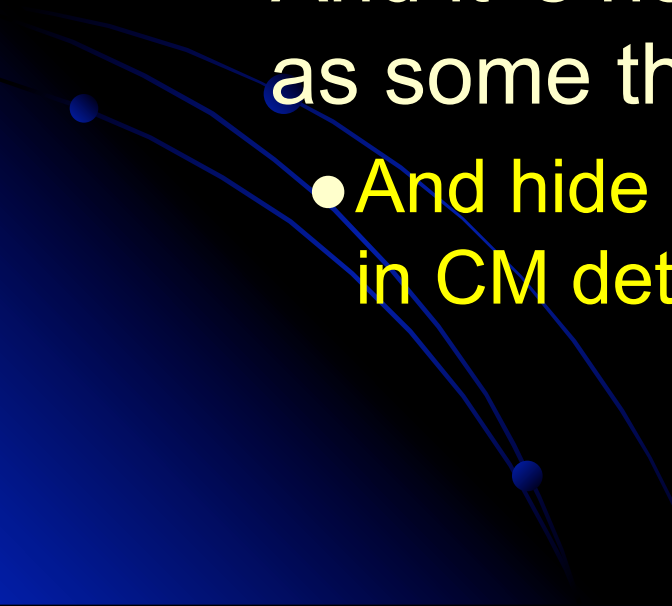
# For examinees concerned about movement sensors...

- “...one might employ mental countermeasures (which in any event would be my first choice if I were to use countermeasures) or tongue biting, combined with breathing manipulations”

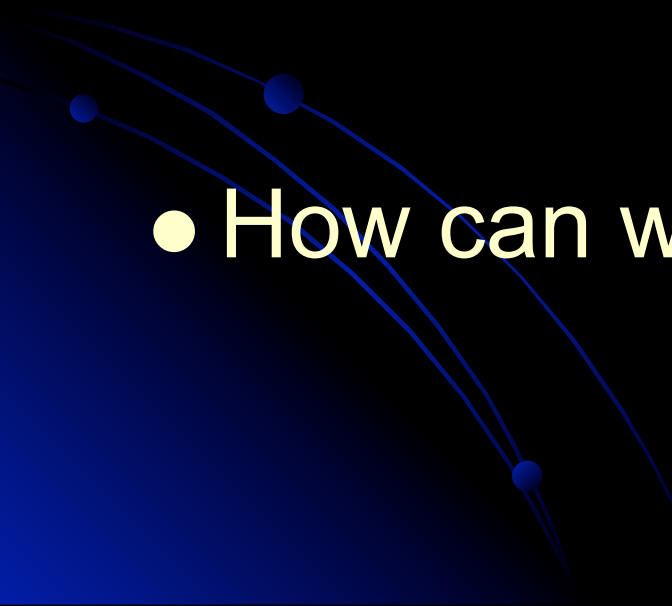
3 Mar 05



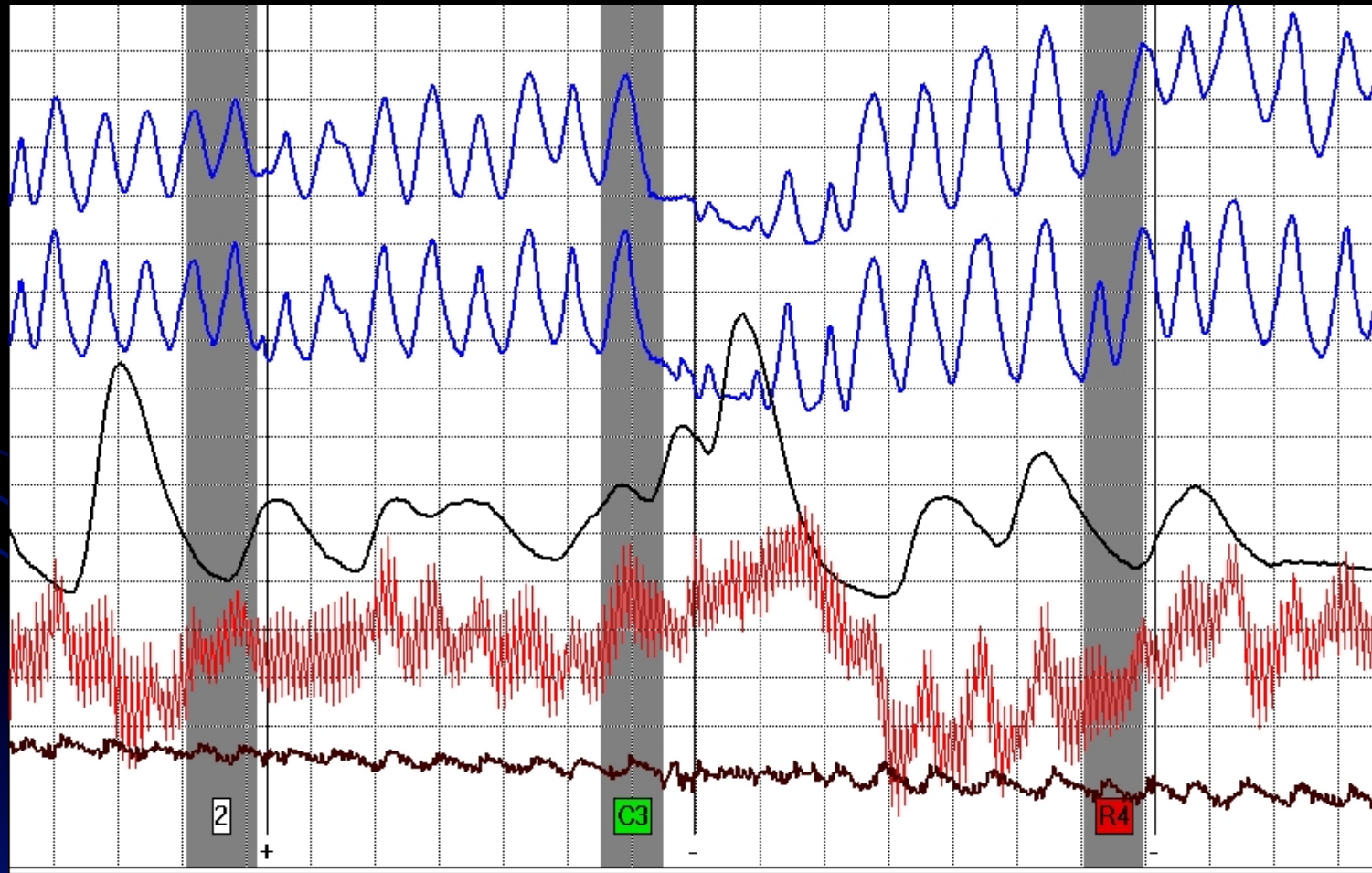
# The good news...

- Fortunately (for you) & unfortunately for some prospective subjects...
    - Some of the information is inaccurate
    - And it's not as easy to employ most Cm as some think...
      - And hide it from an examiner who is trained in CM detection and recognizes the threat
- 

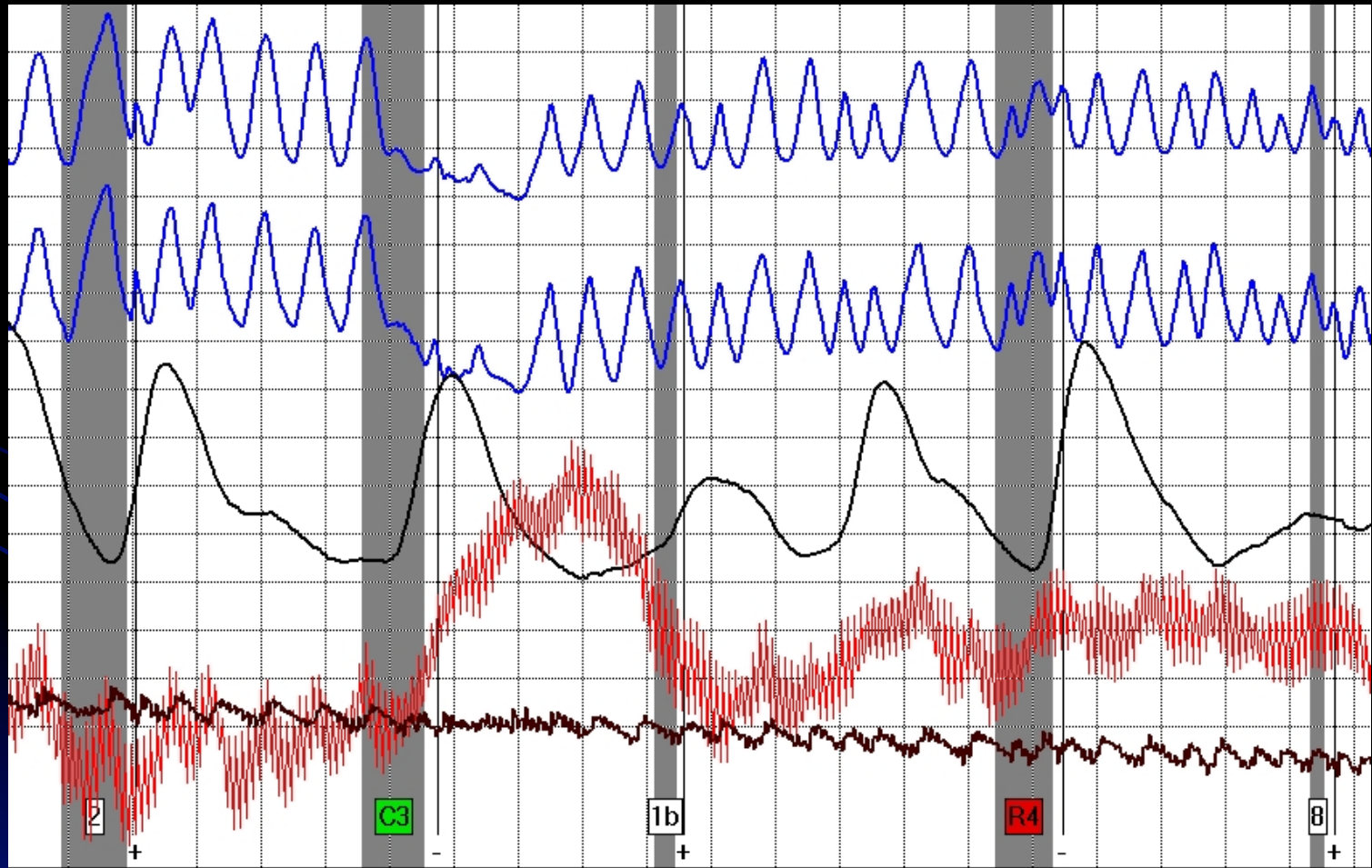
# Atypical Physiological Responses

- Is there a difference between the physiology normally observed on charts and that which is atypical?
  - How can we tell?
- 

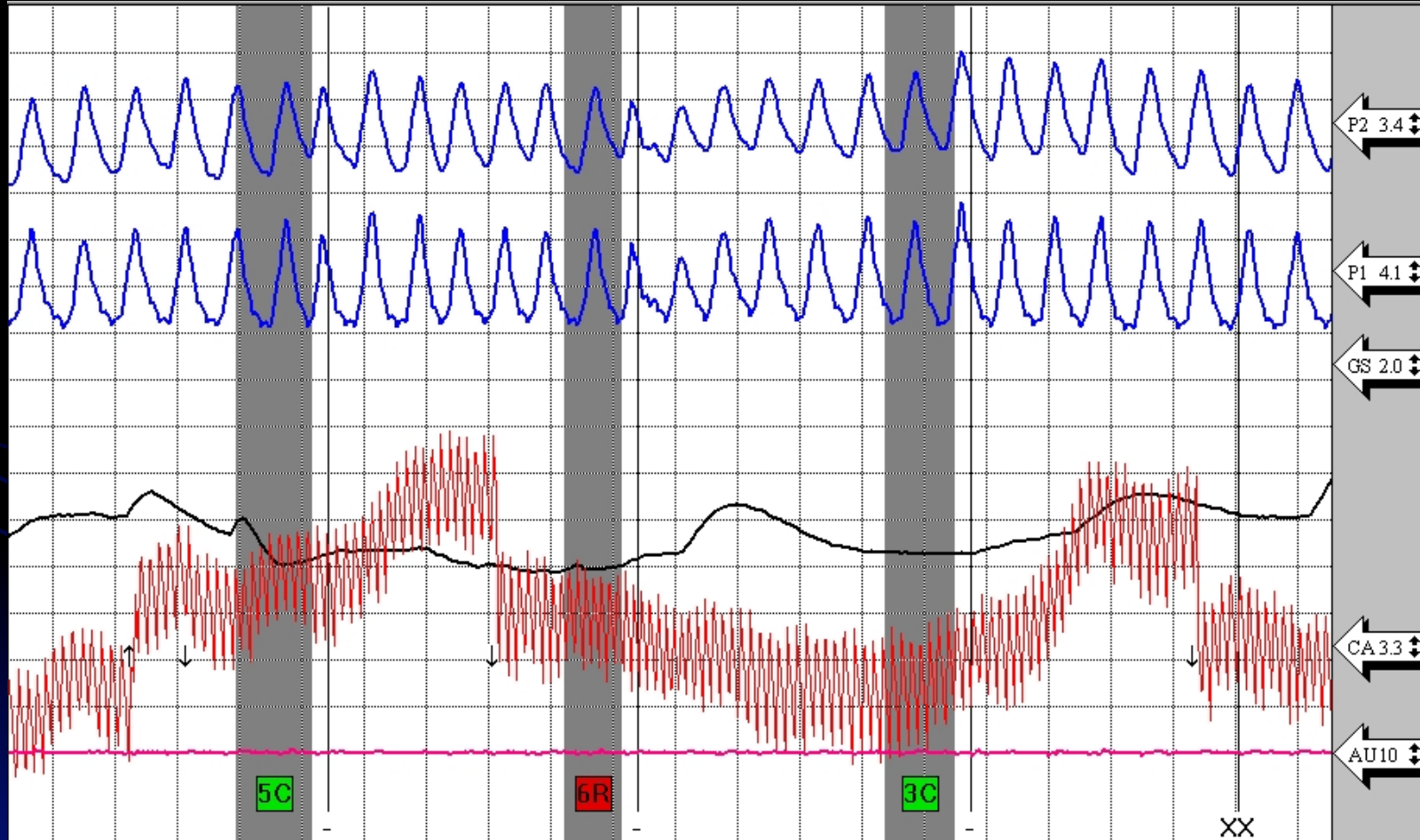
# Atypical or legitimate?



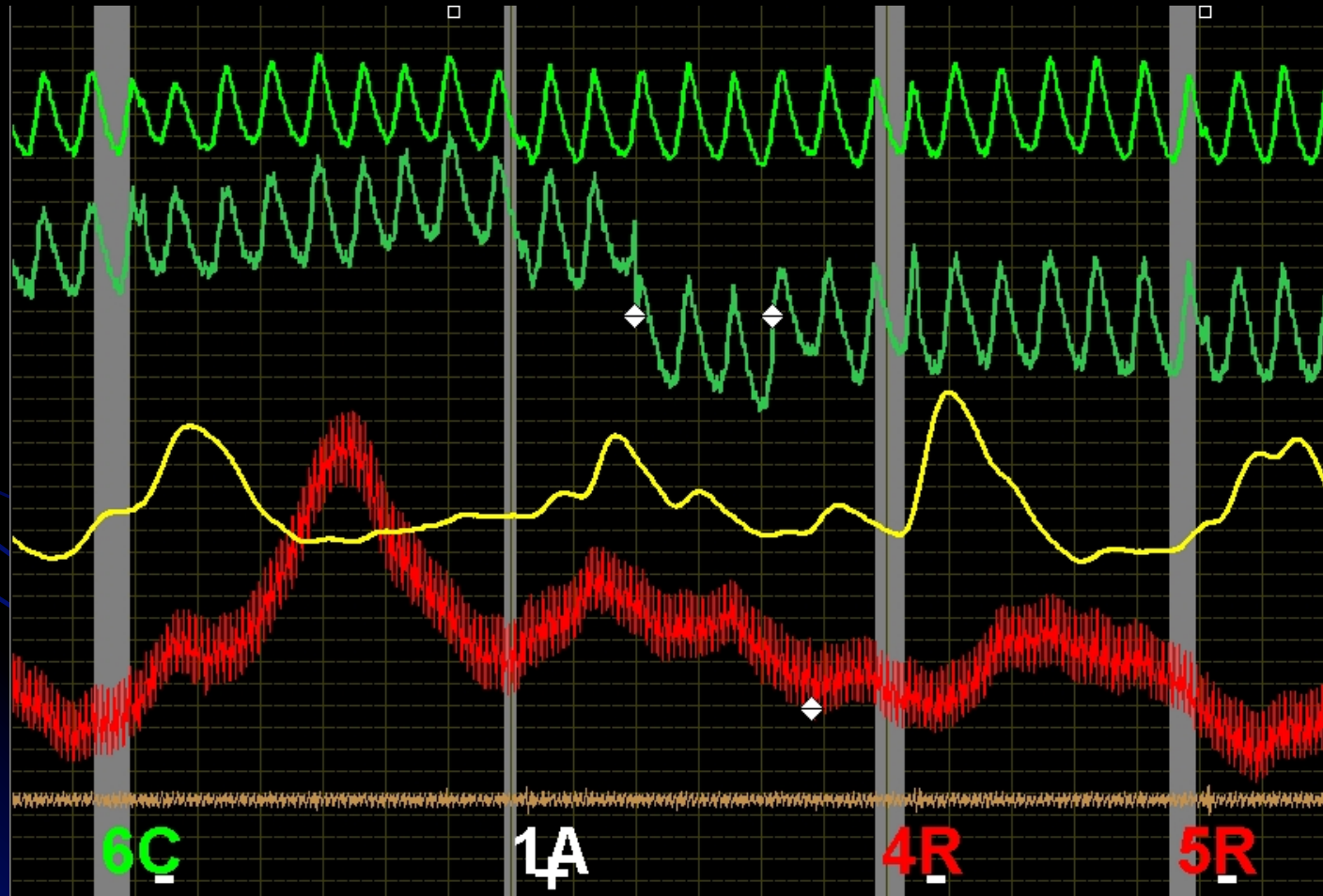
# Atypical or legitimate?



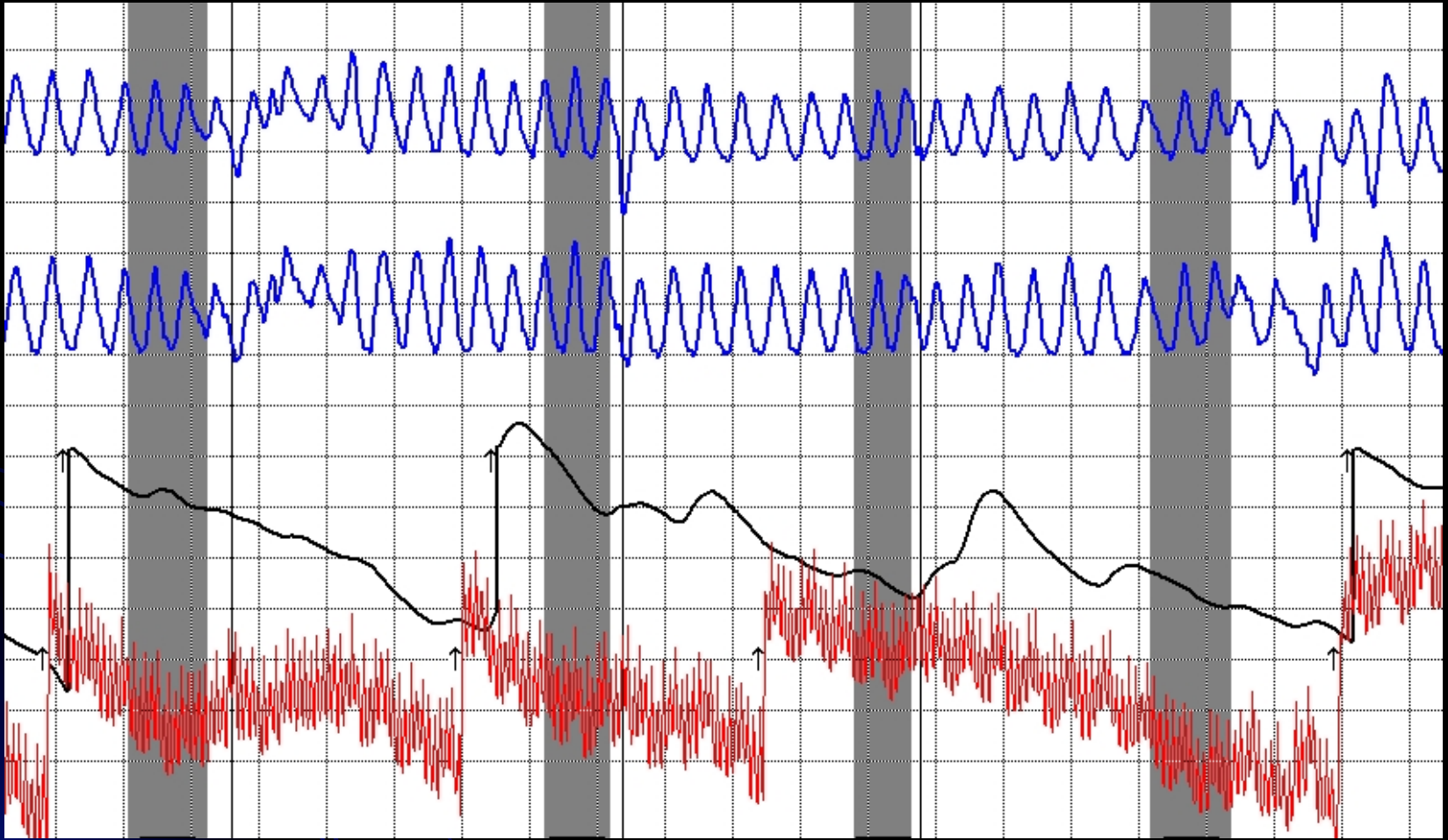
# Atypical or legitimate?



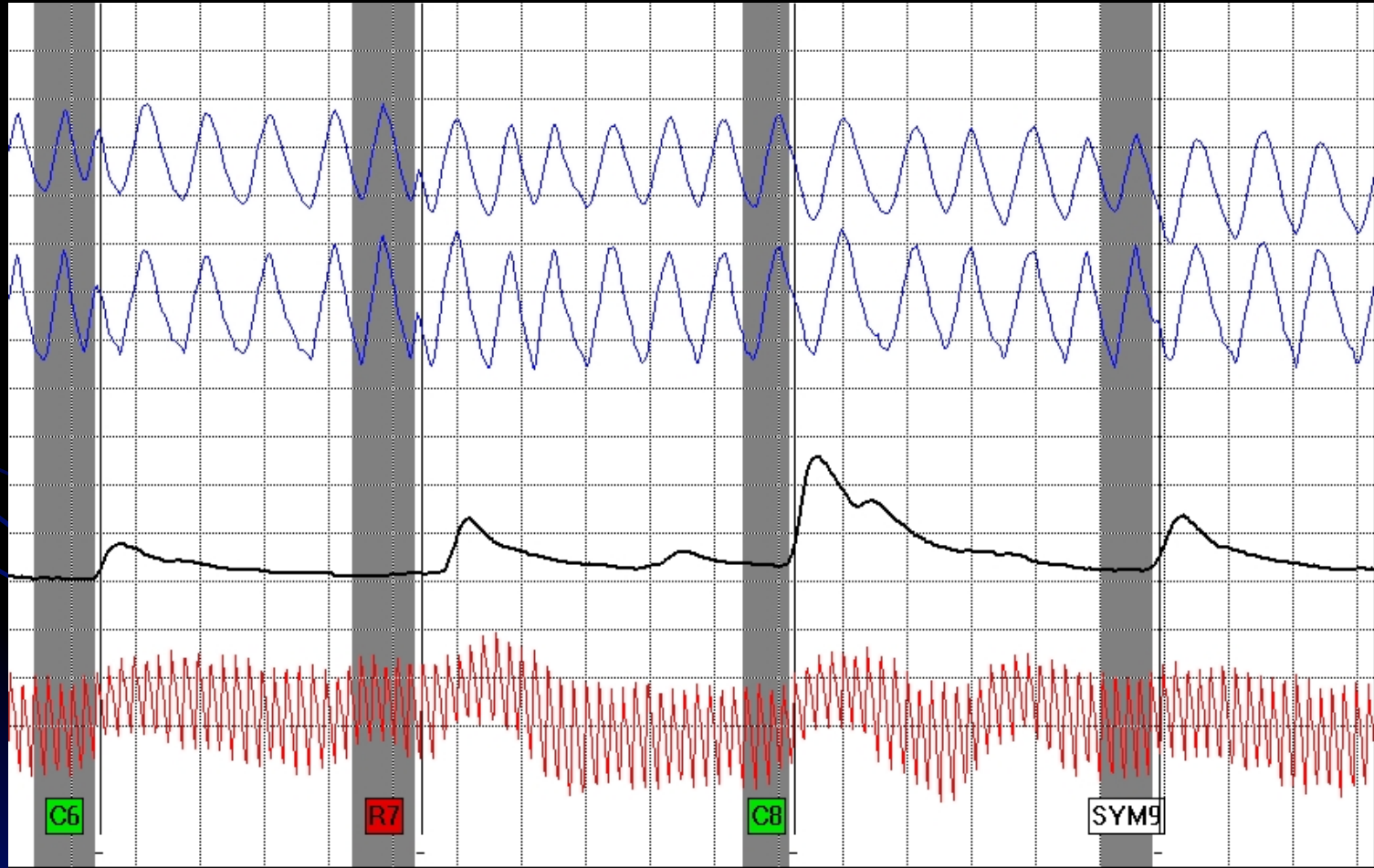
# Atypical or legitimate?



# Atypical or legitimate?

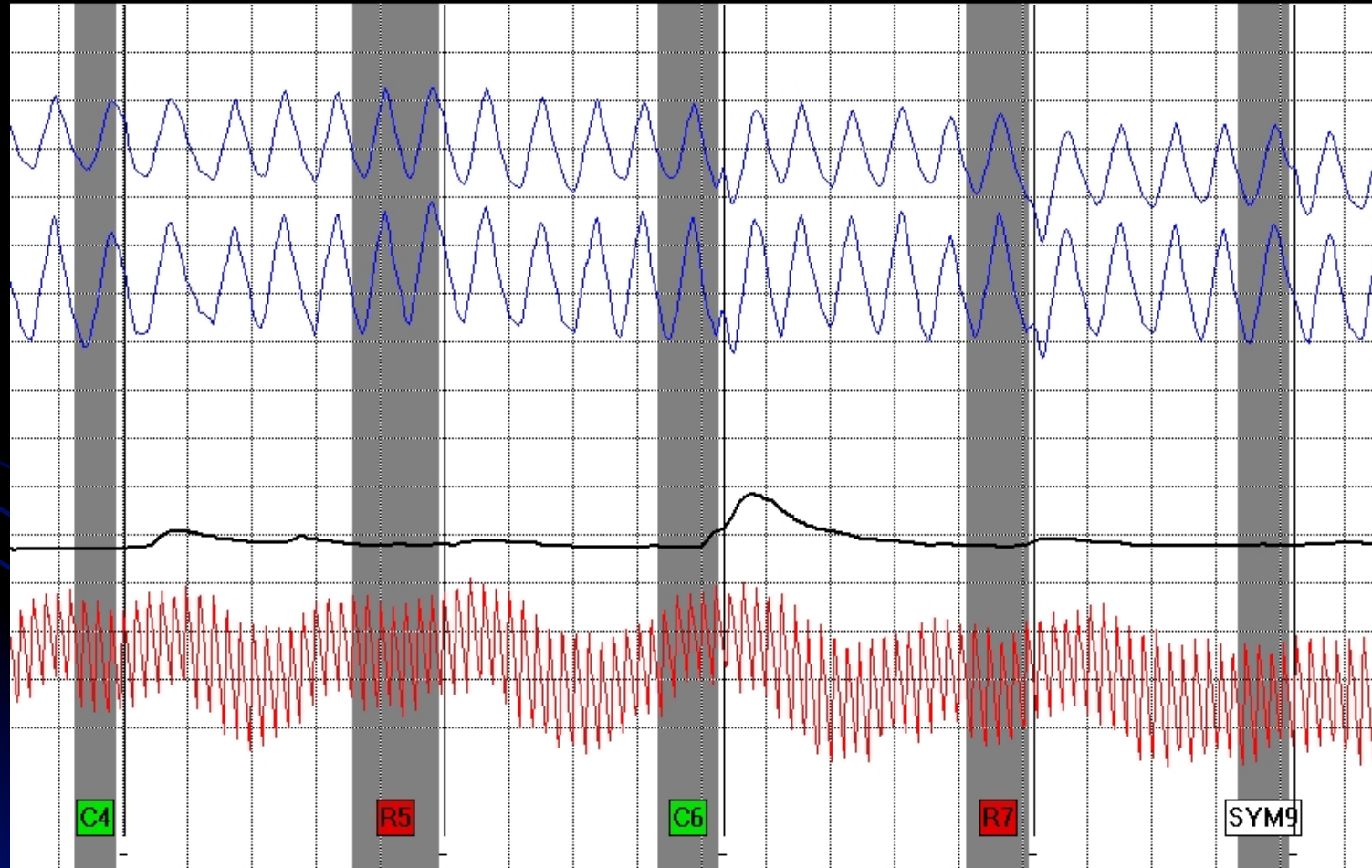


# Atypical or legitimate?






# Atypical or legitimate?



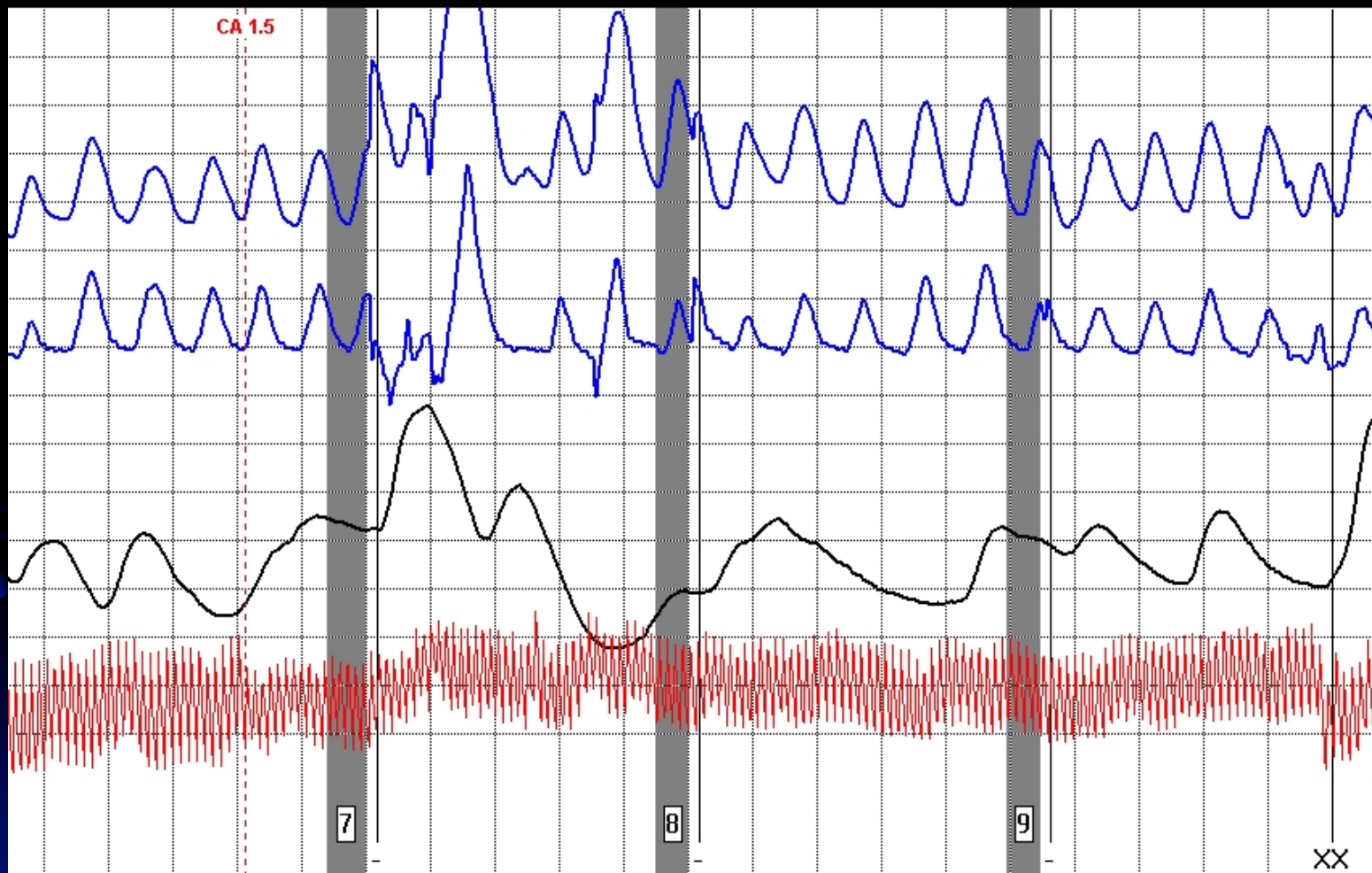
# Sensors & Cms

...how should we treat movements?

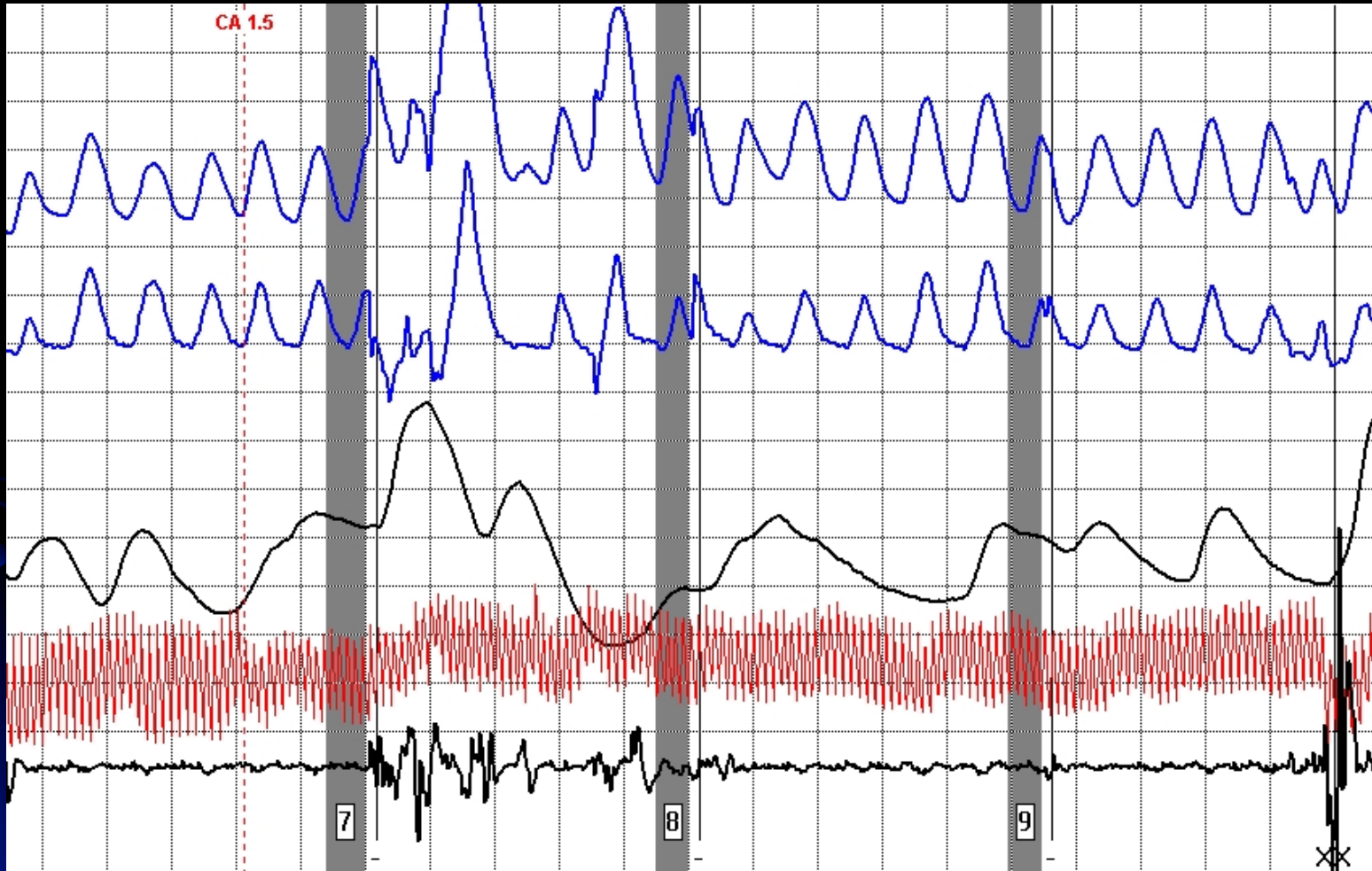
# Do we need new rules?

- How should we treat artifacts?
    - Depends on where & when they occur
      - *Frequency & Specificity*
  - Is this really anything new?
- 

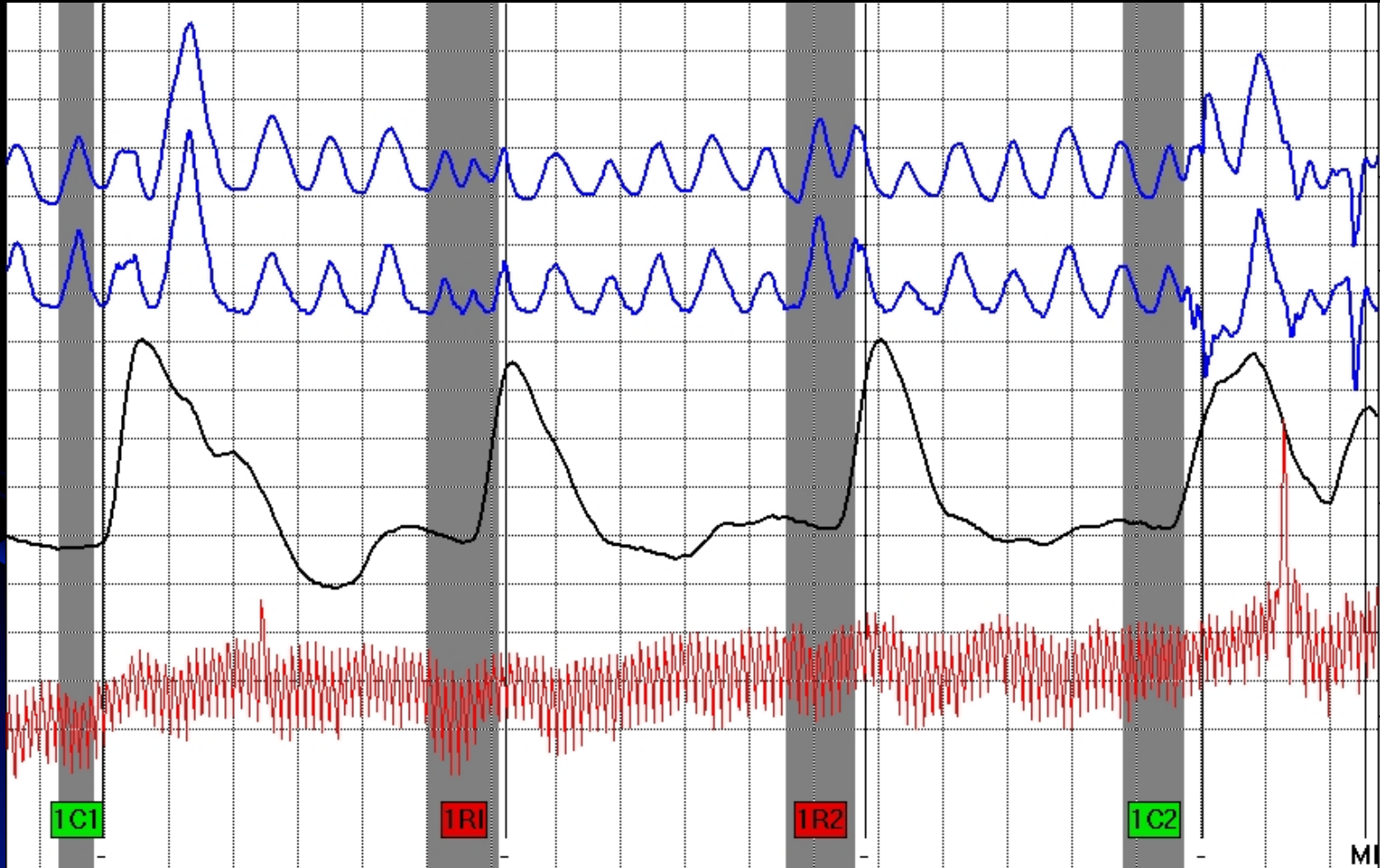
# ACQT



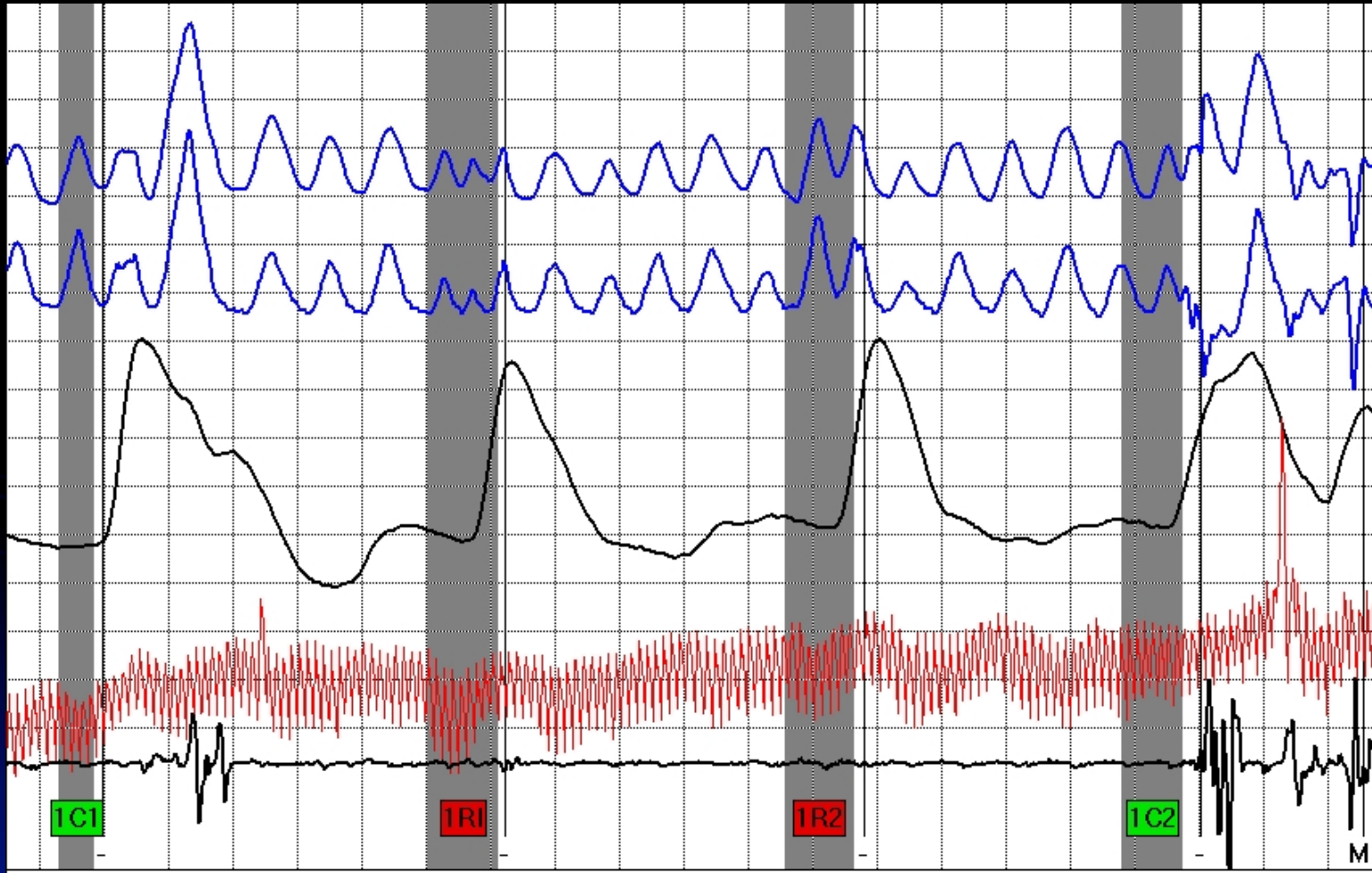
# ACQT w/sensor



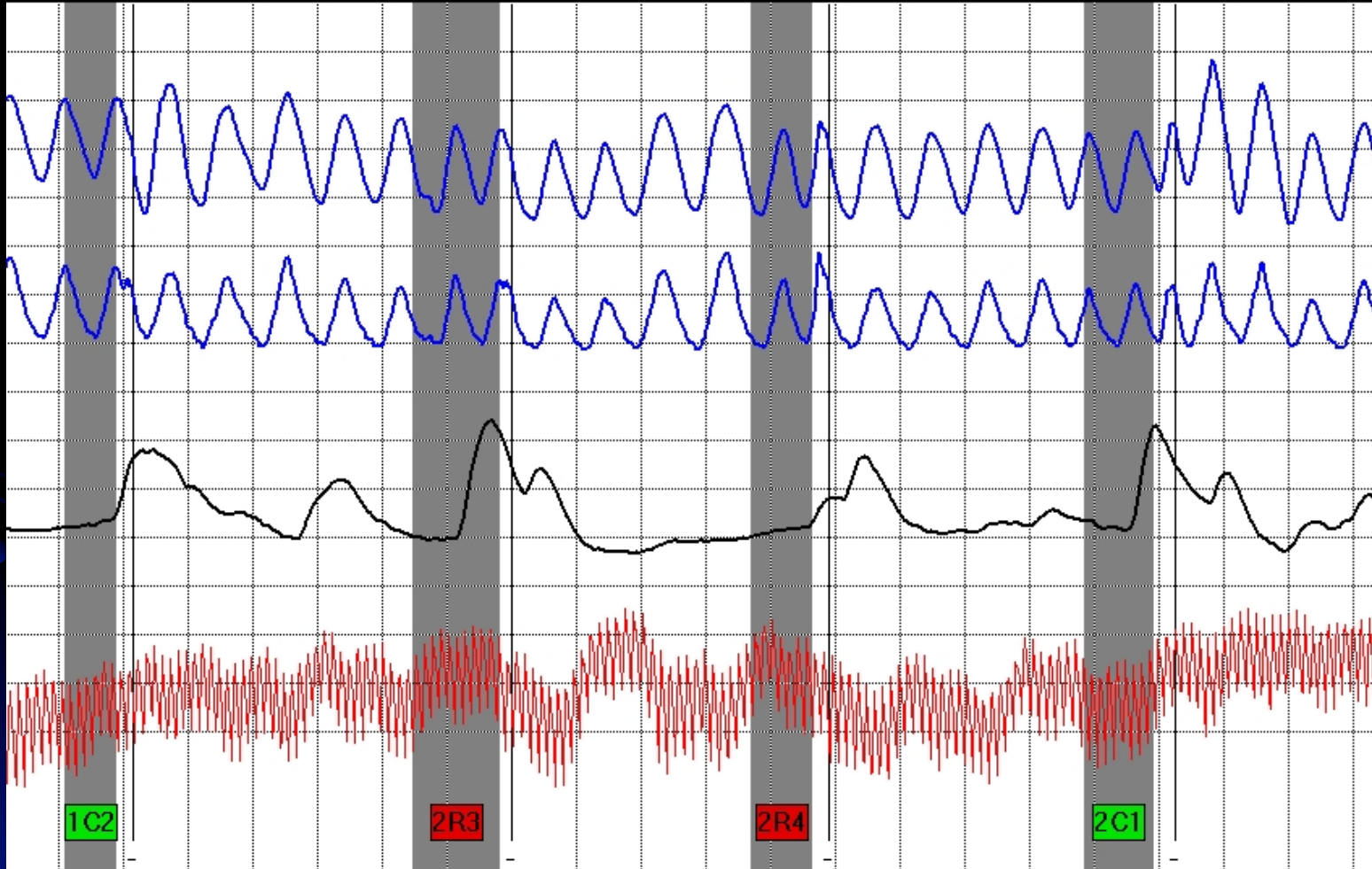
# I-1



# I-1 w/sensor

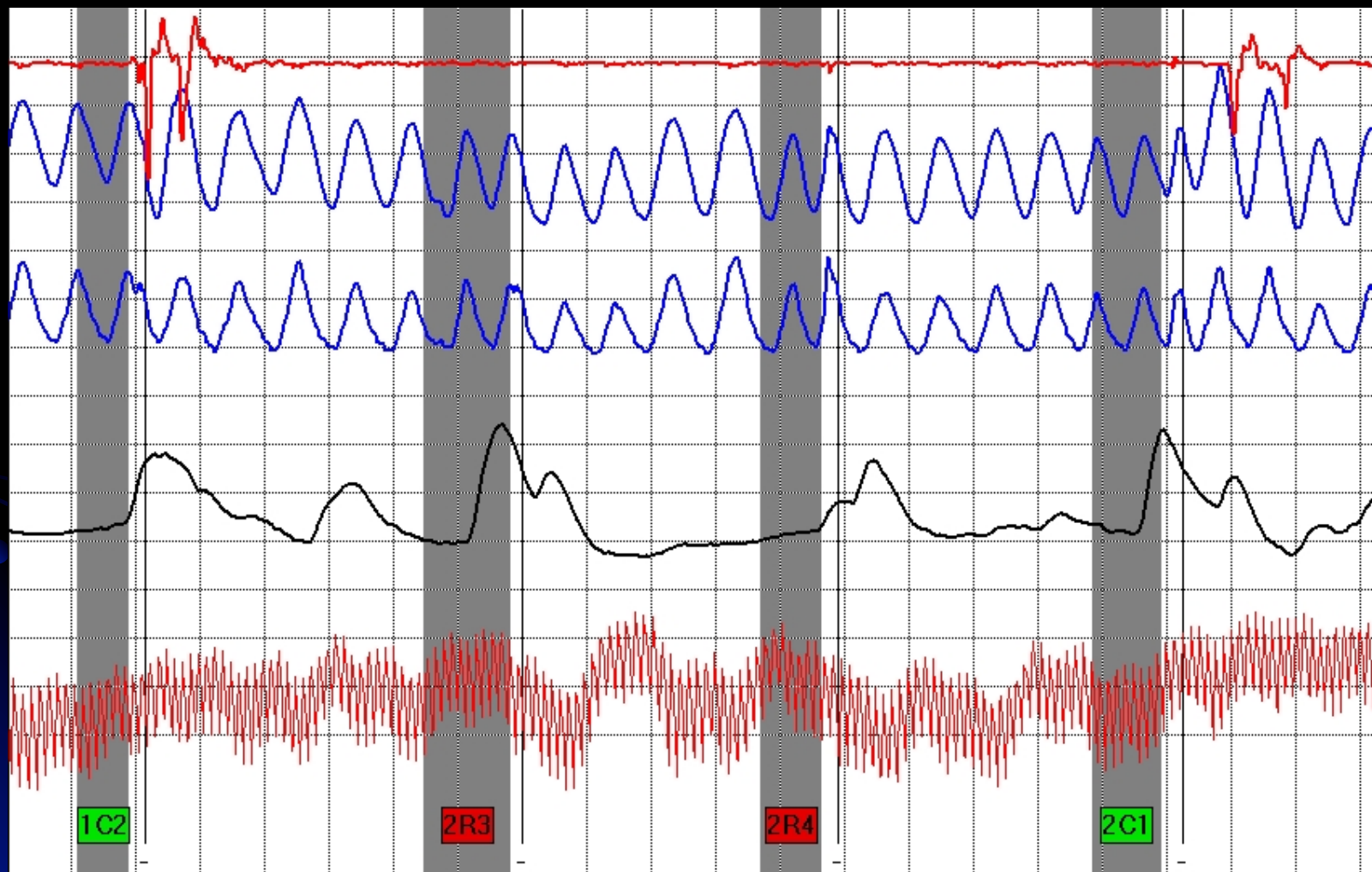


# I-2 Any problem?

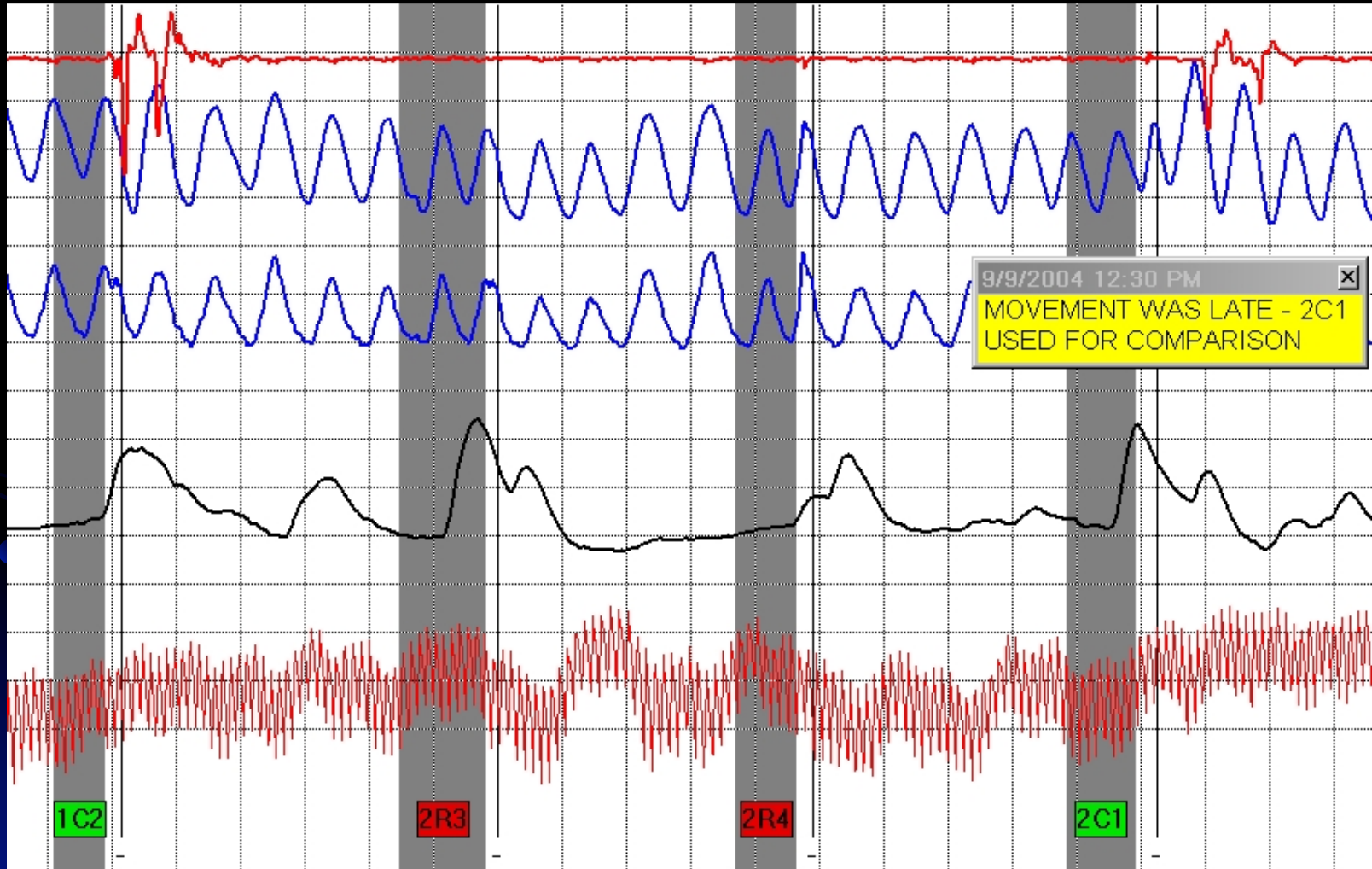




# Movements?



# What do you think?



# What do we do ?

- Analysis

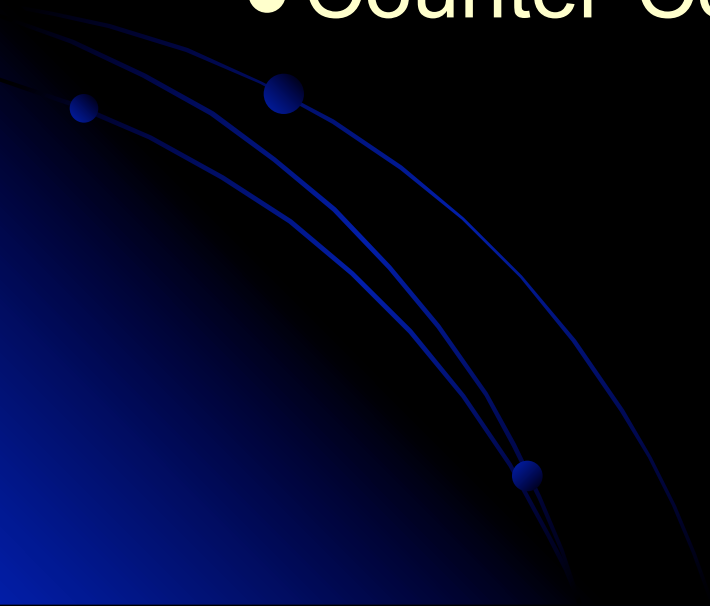
- Is the physiology typical of what we normally see?

- Is there a *frequency & specificity* to any of the movements or atypical physiology

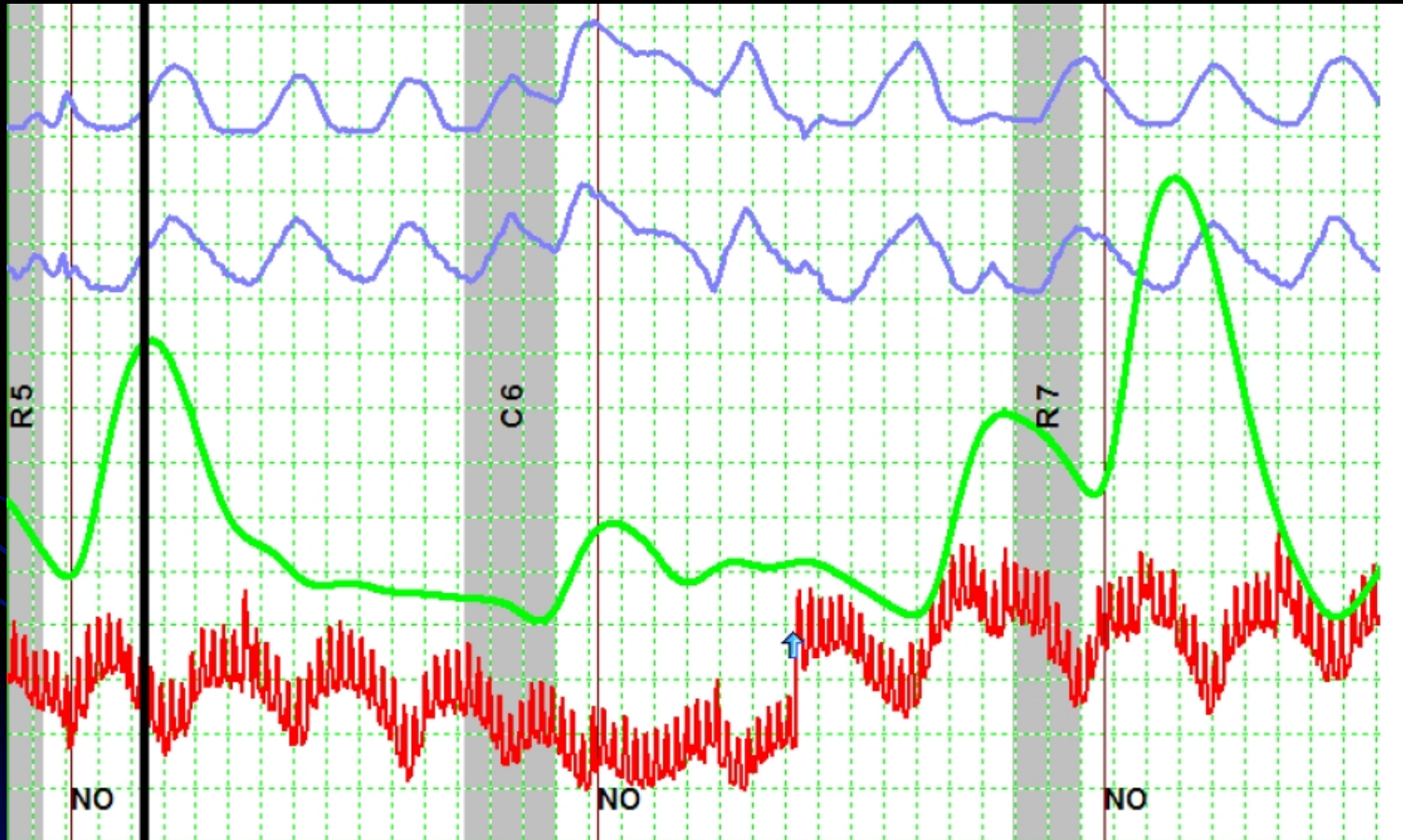


# What do we do ?

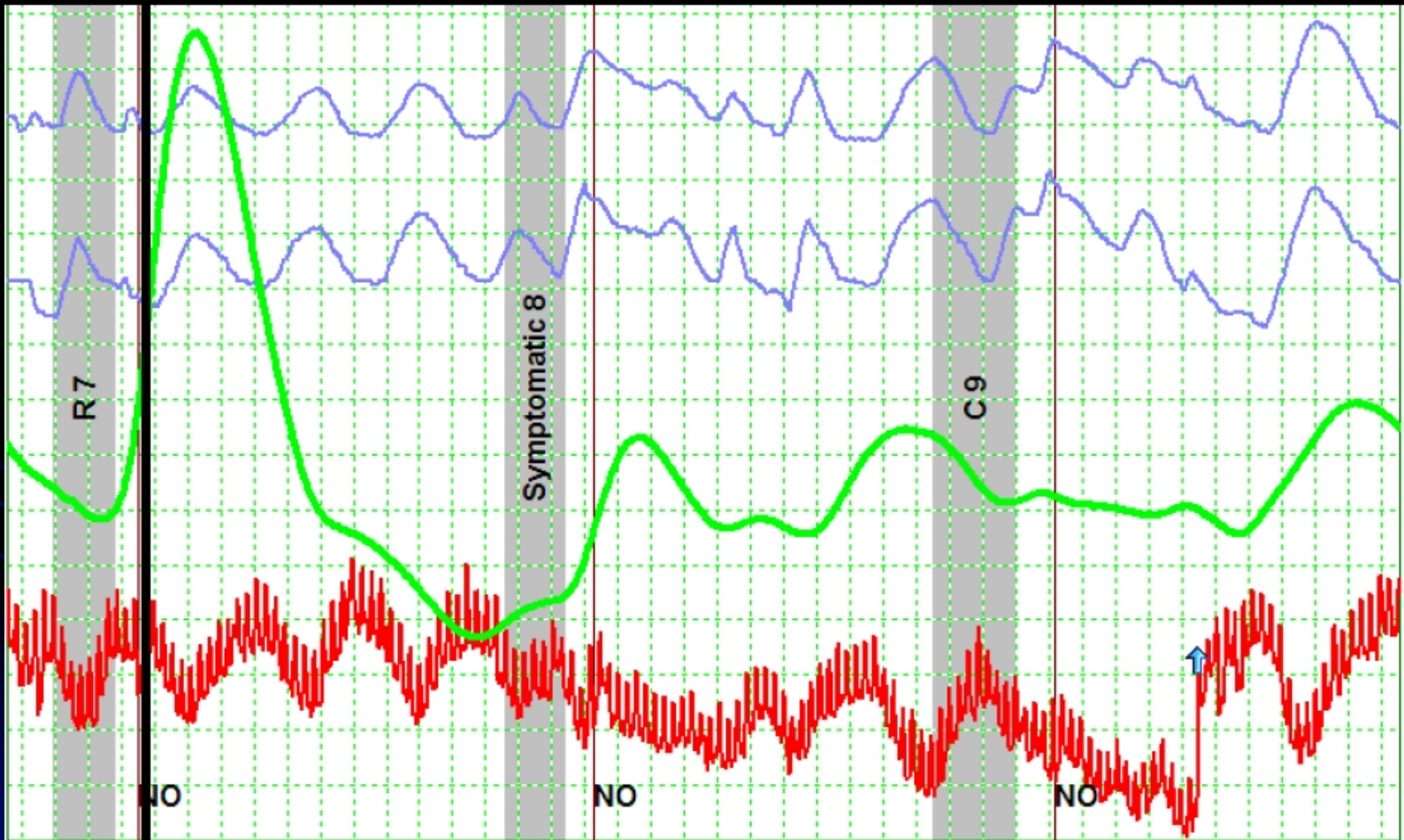
- Anti-countermeasures
- Counter-Countermeasures




# What not to do... in posttest



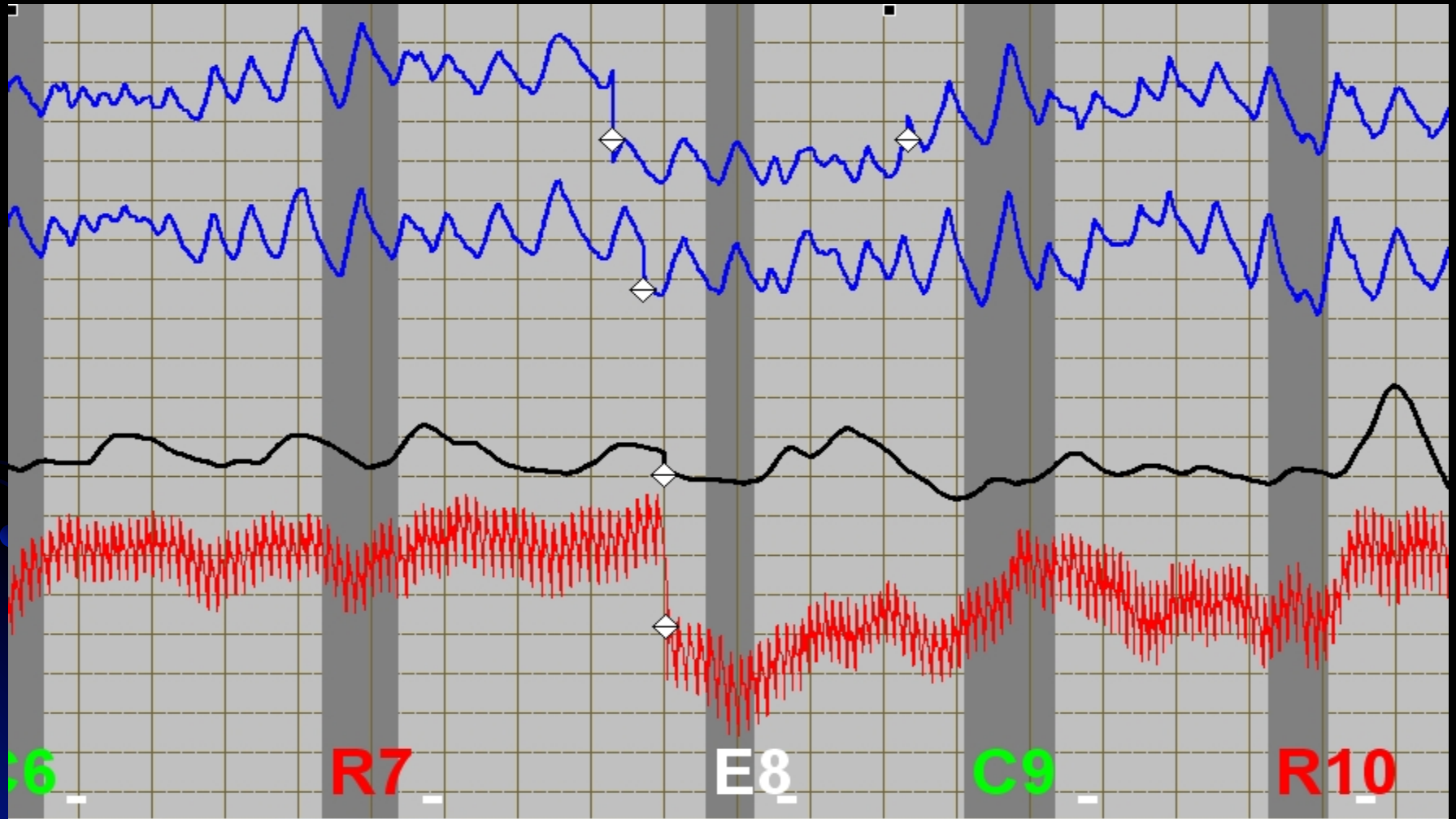
# What not to do...



# Let's look at some cases...

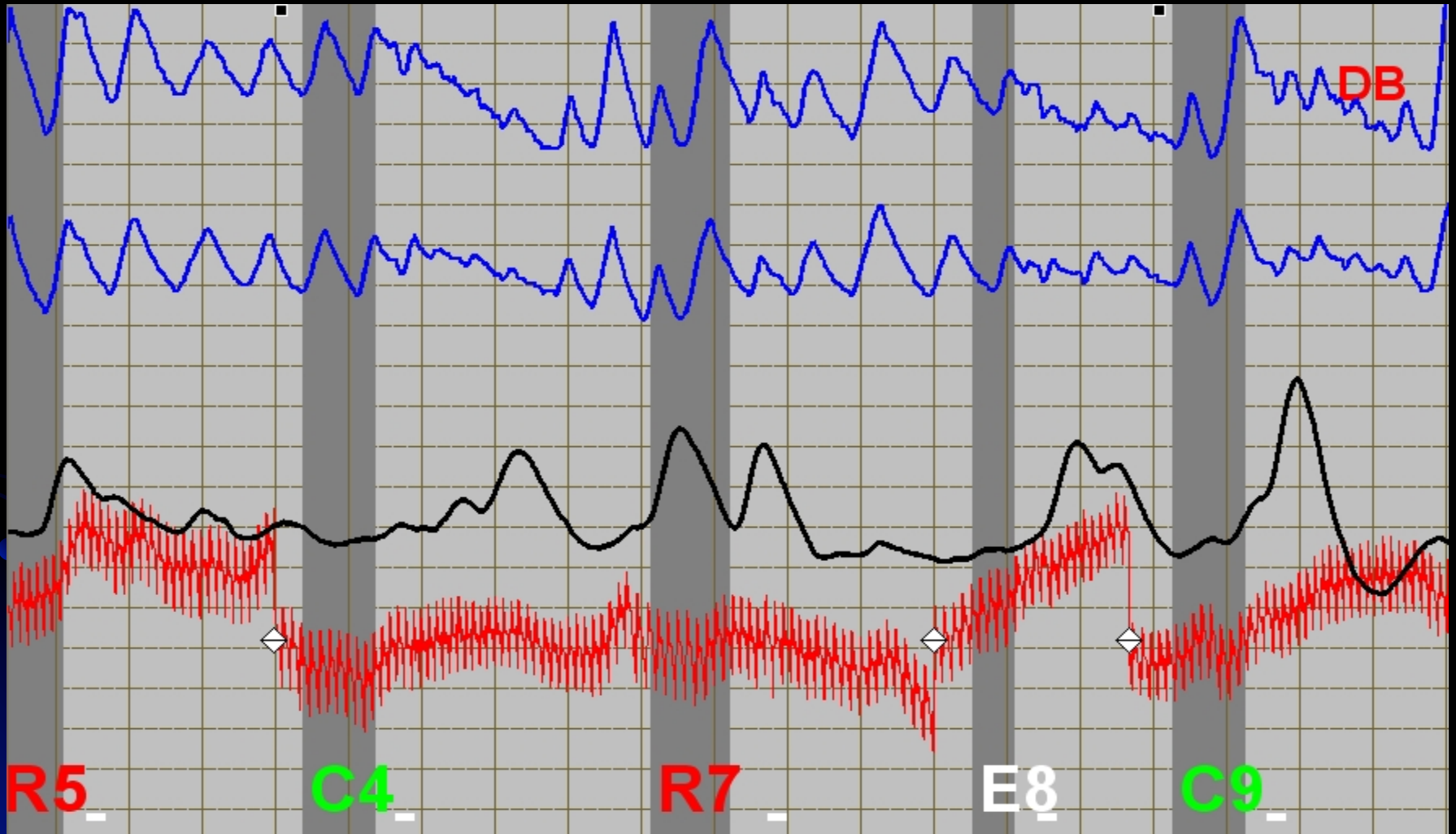
- All are from exams in which the subject admitted applying CM
  - All obtained their information from the internet sites
- 

# Sex Offender – I-1

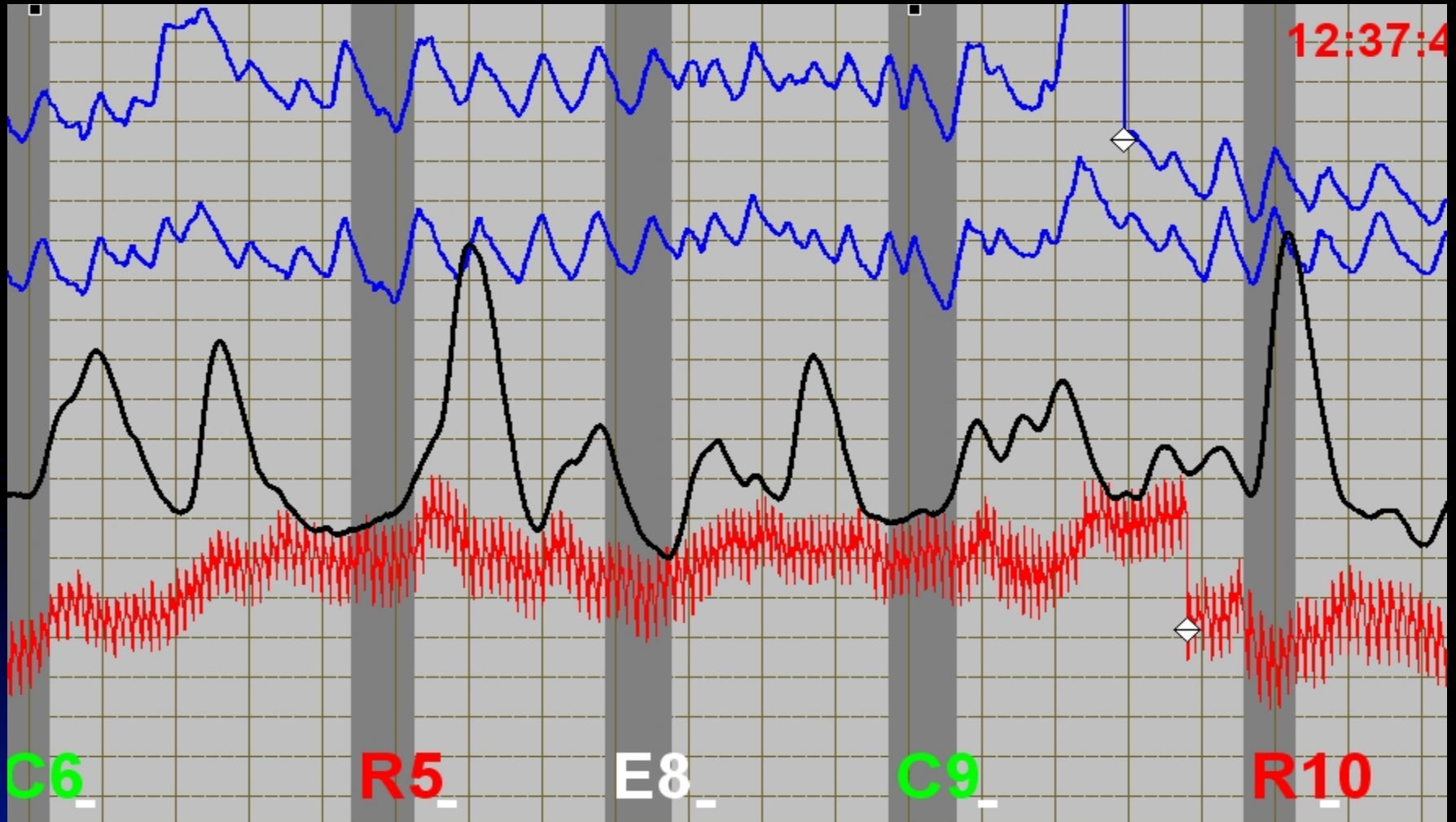




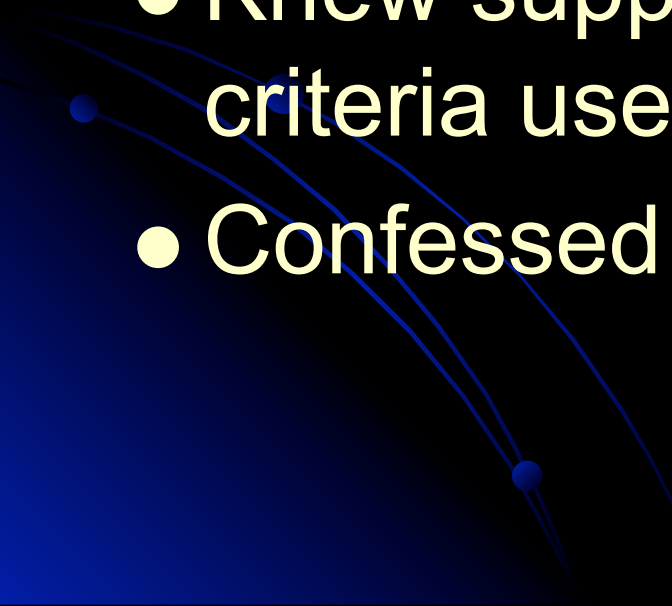
# Sex Offender – I-2



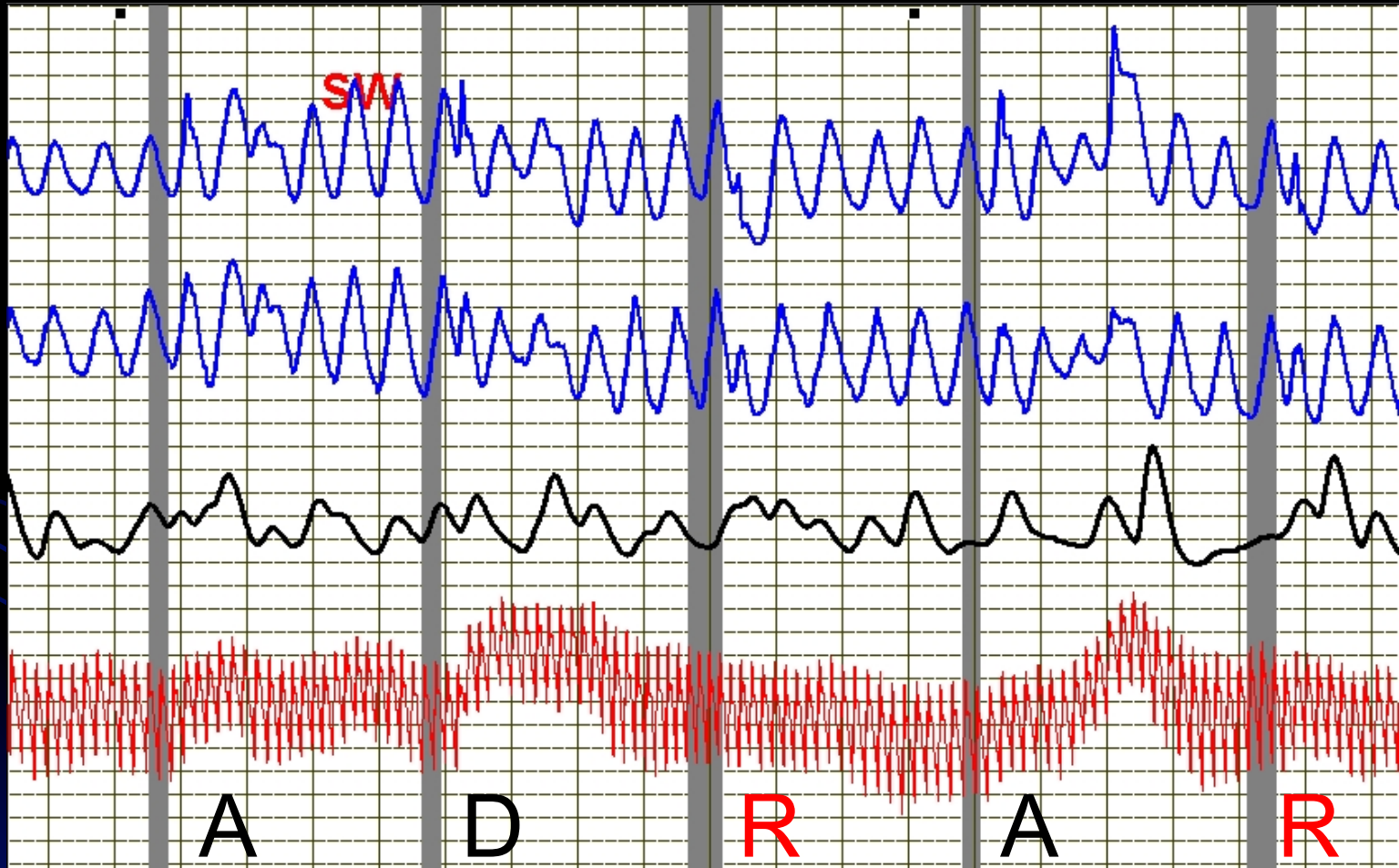
# Sex Offender – I-3



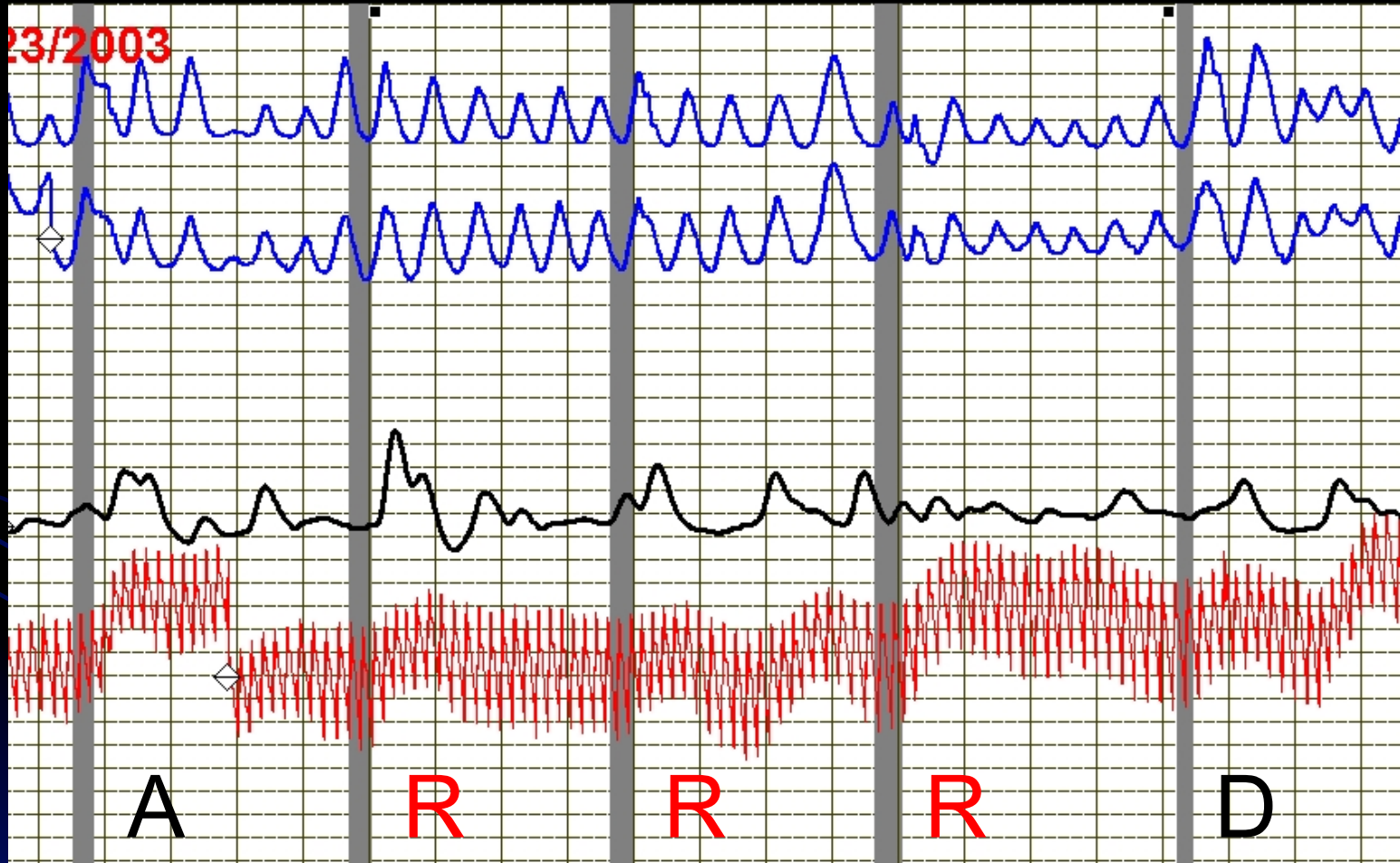
# Sex Offender

- Sex Offender Maintenance Exam
  - Controlled Breathing
  - Antipolygraph.org
  - Knew suppressed breathing was criteria used for evaluation
  - Confessed off-tape...
- 

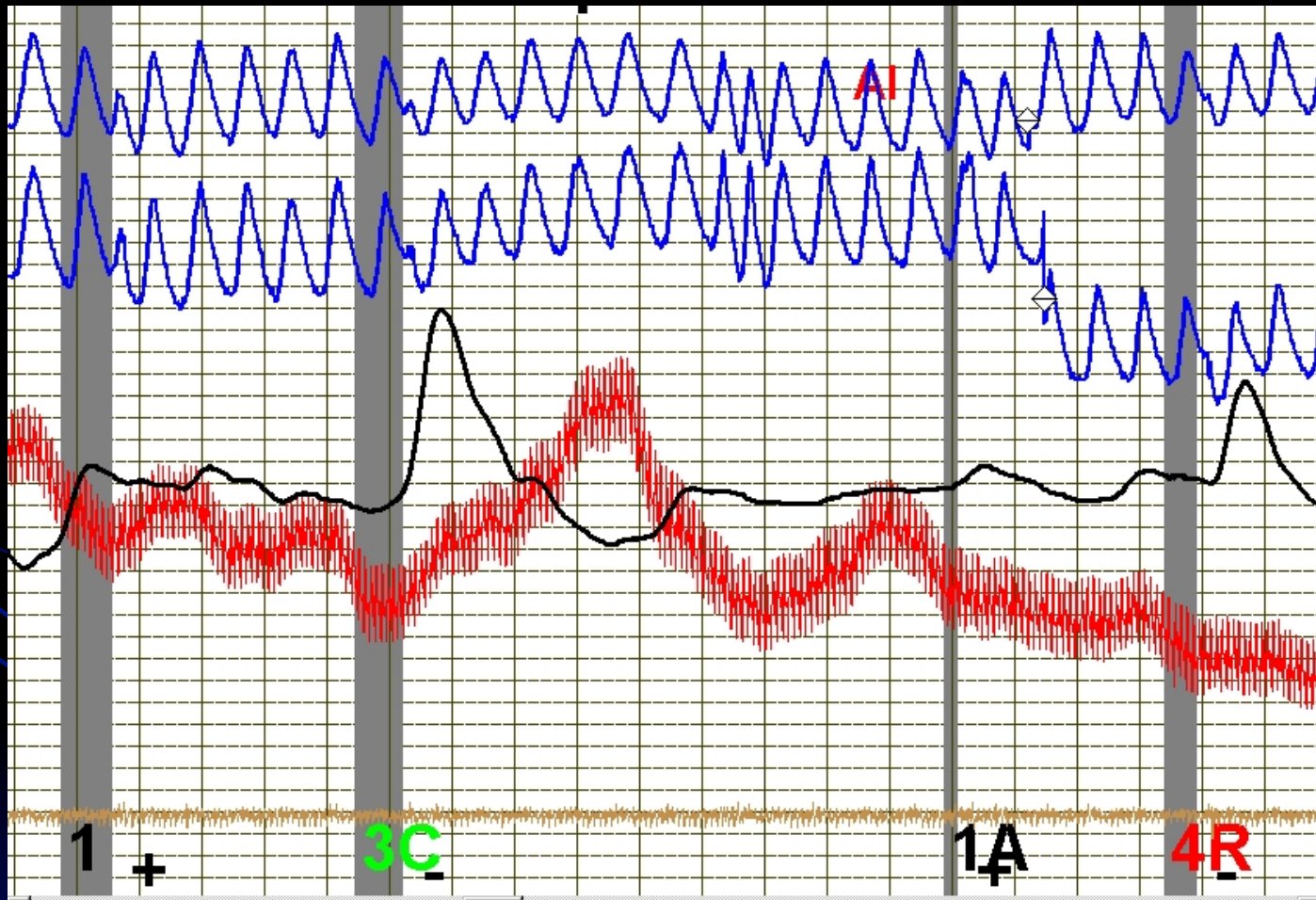
# RI Exam



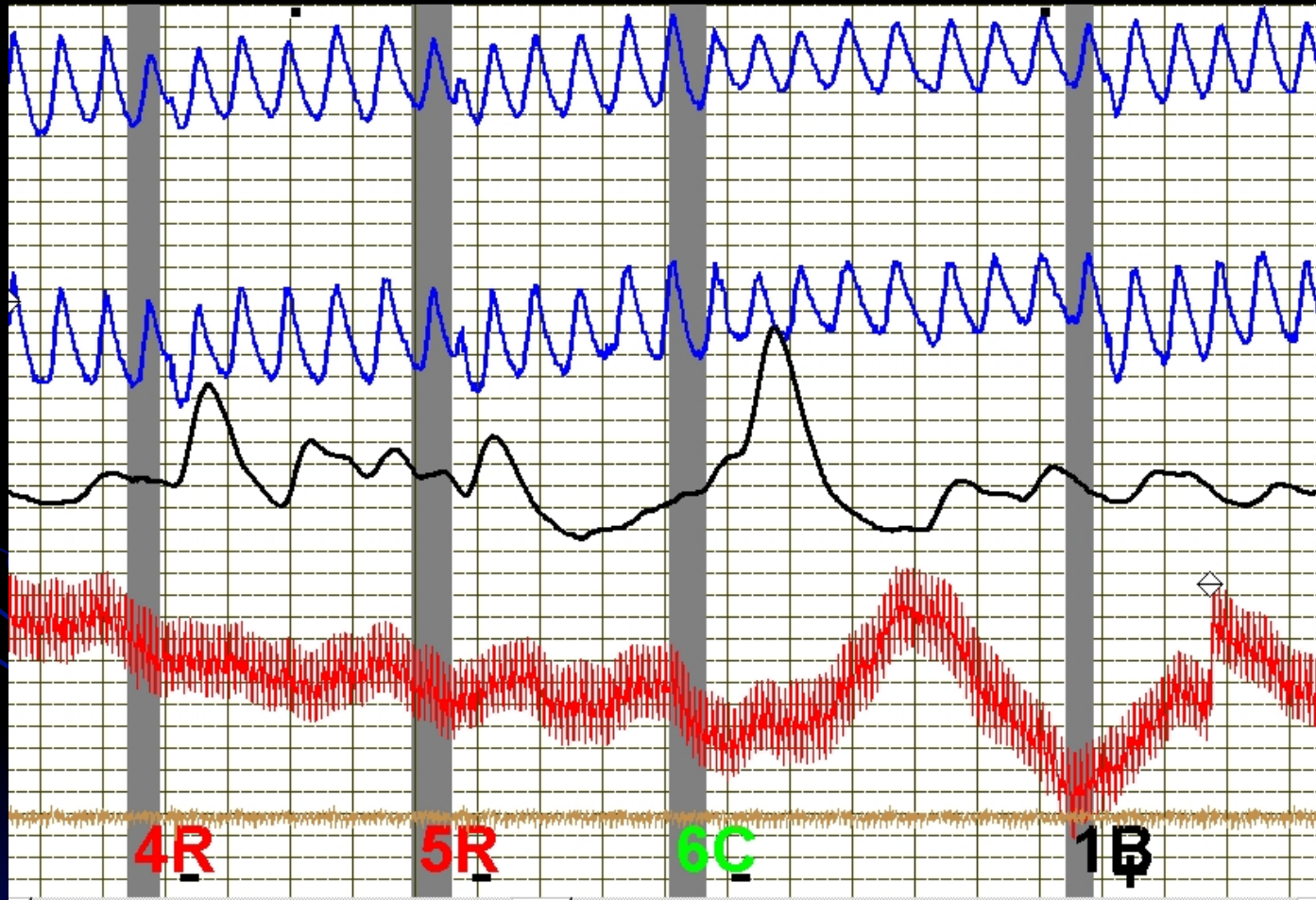
# RI Exam



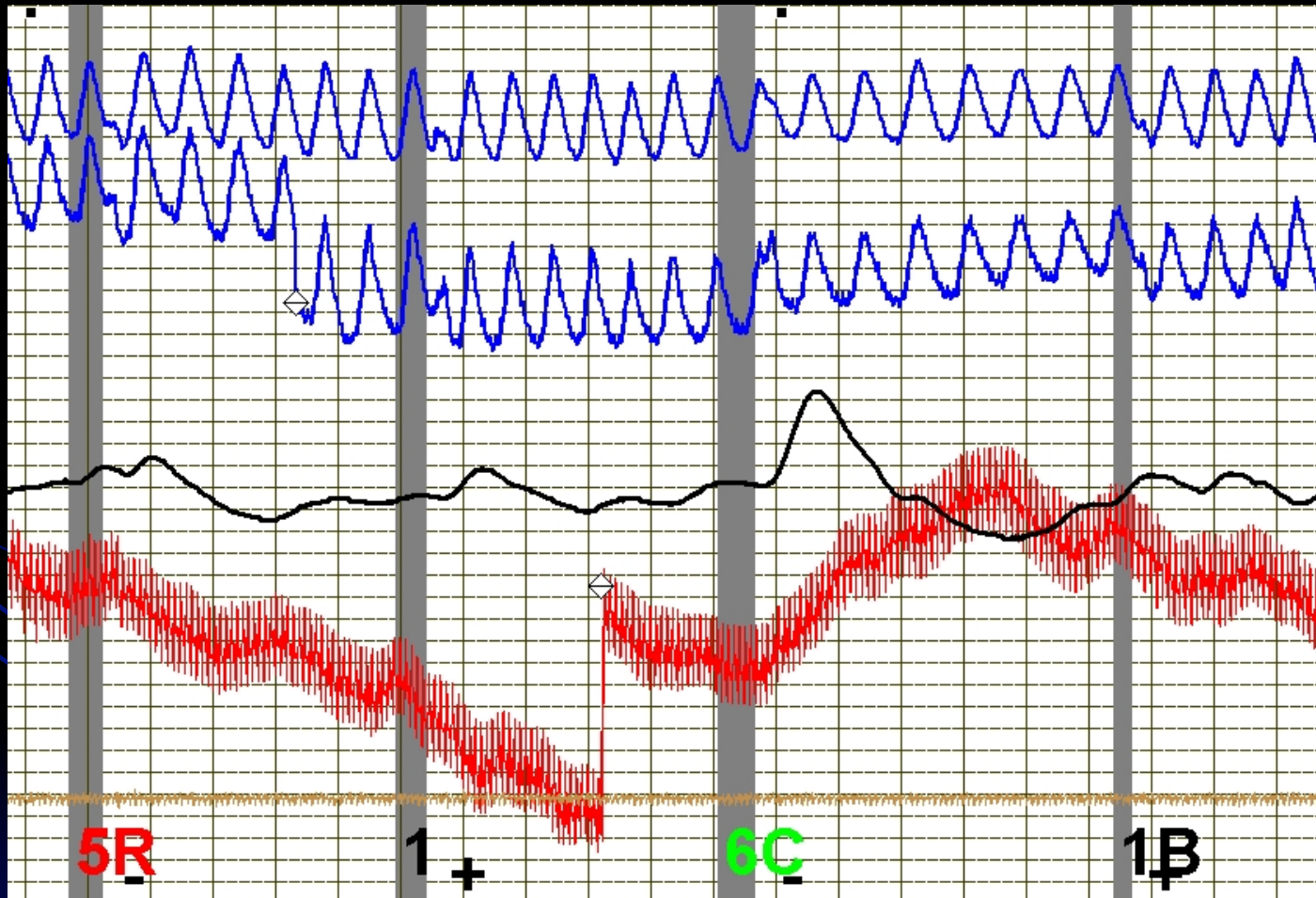
# CQ Exam



# CQ Exam

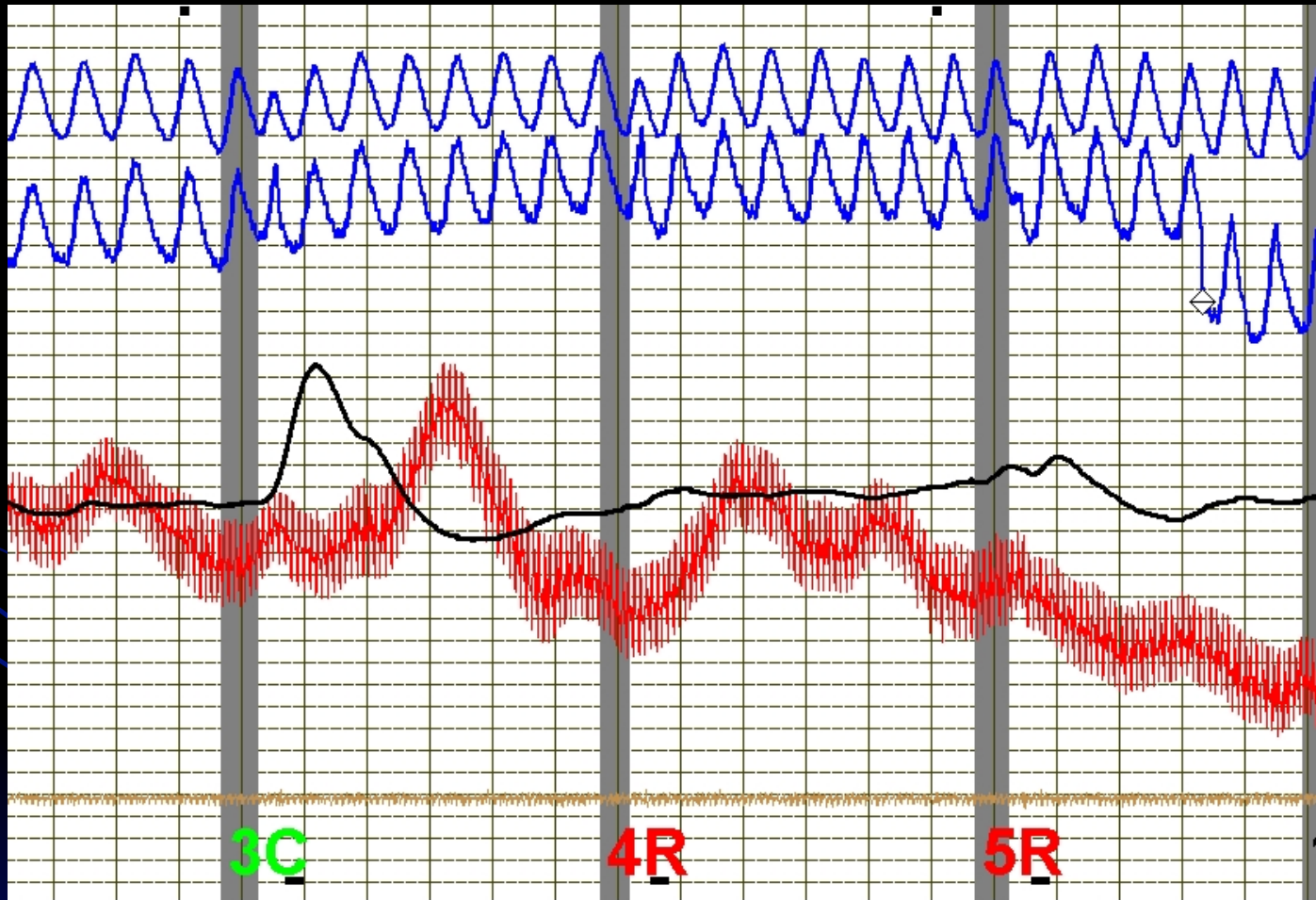


# CQ Exam

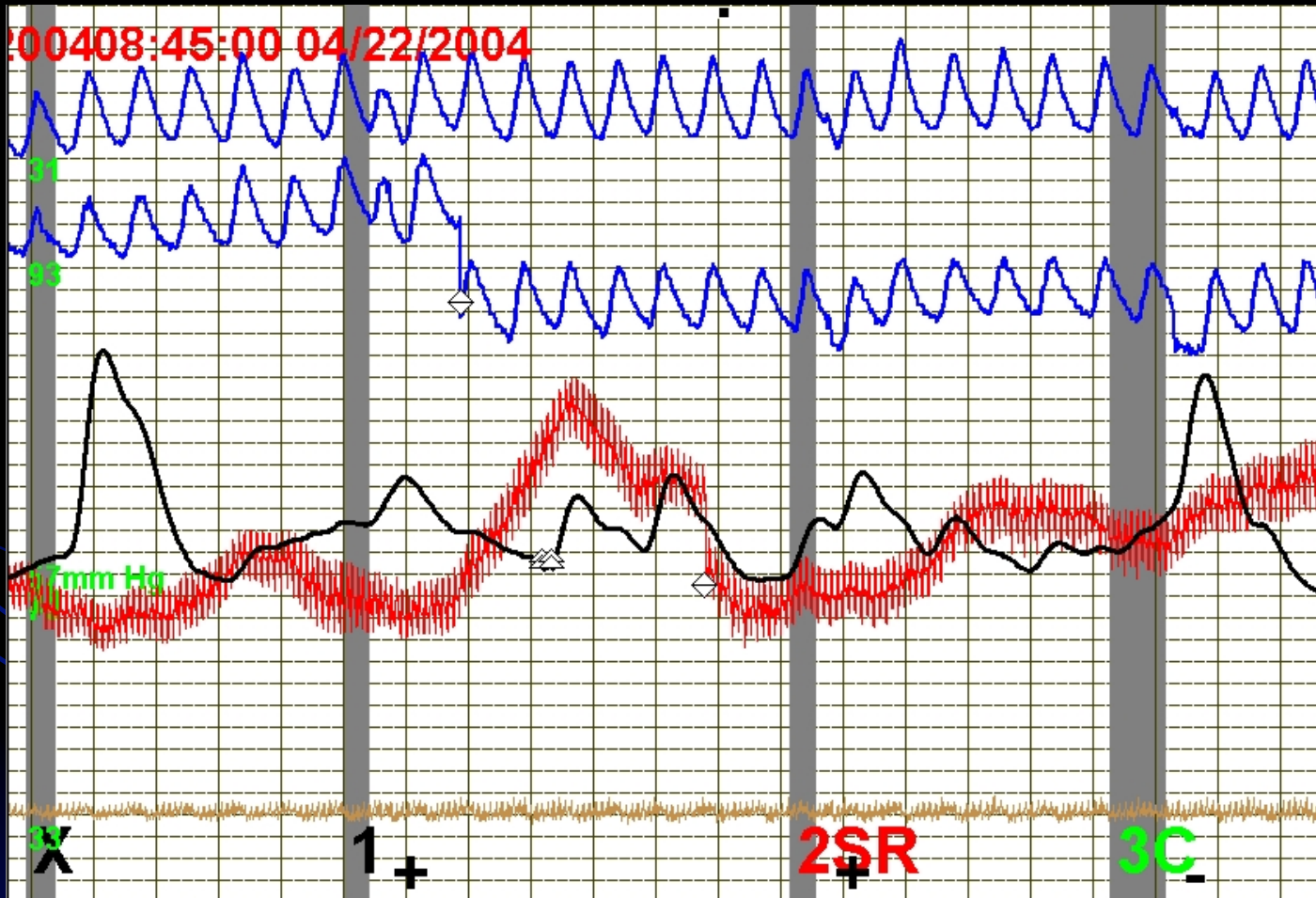




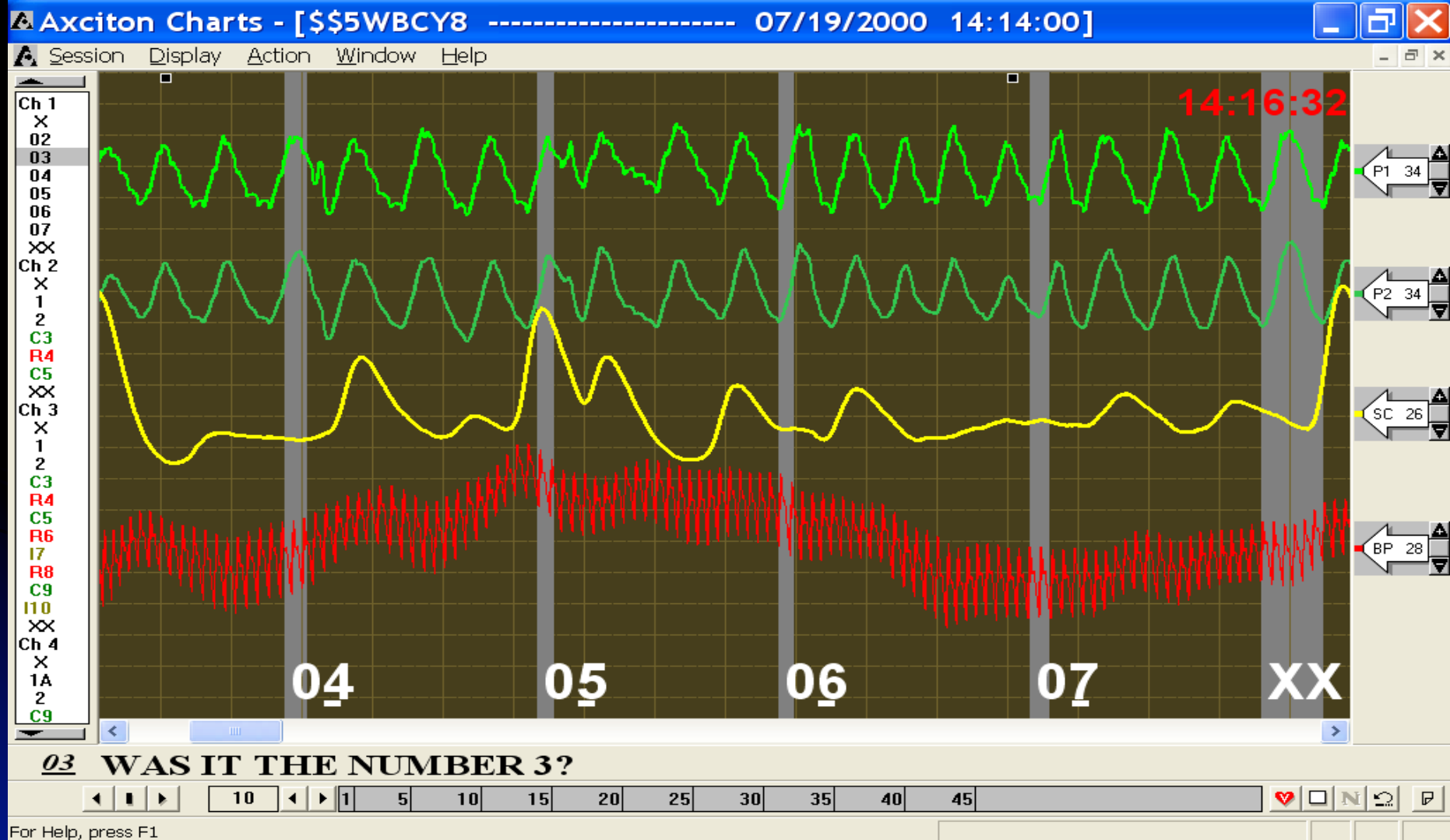
# CQ Exam



# CQ Exam

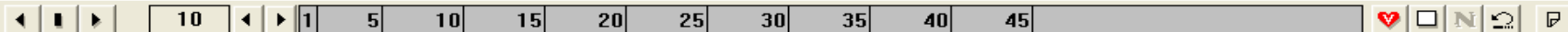


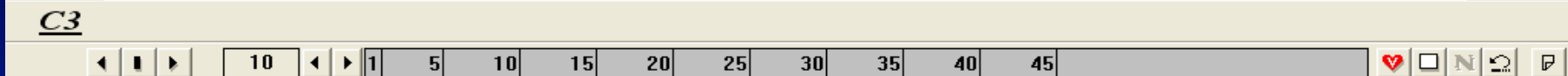
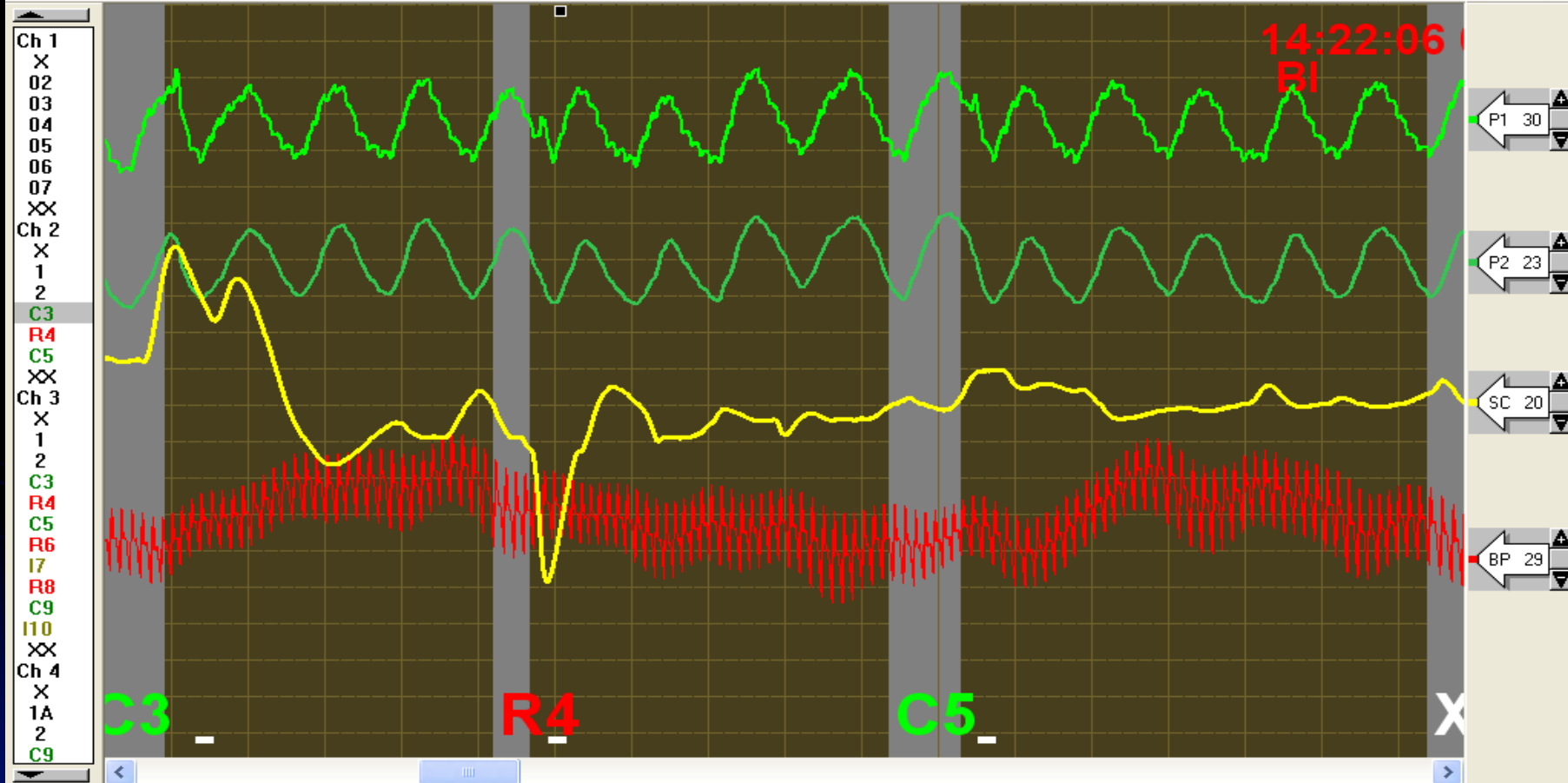
# Criteria present?

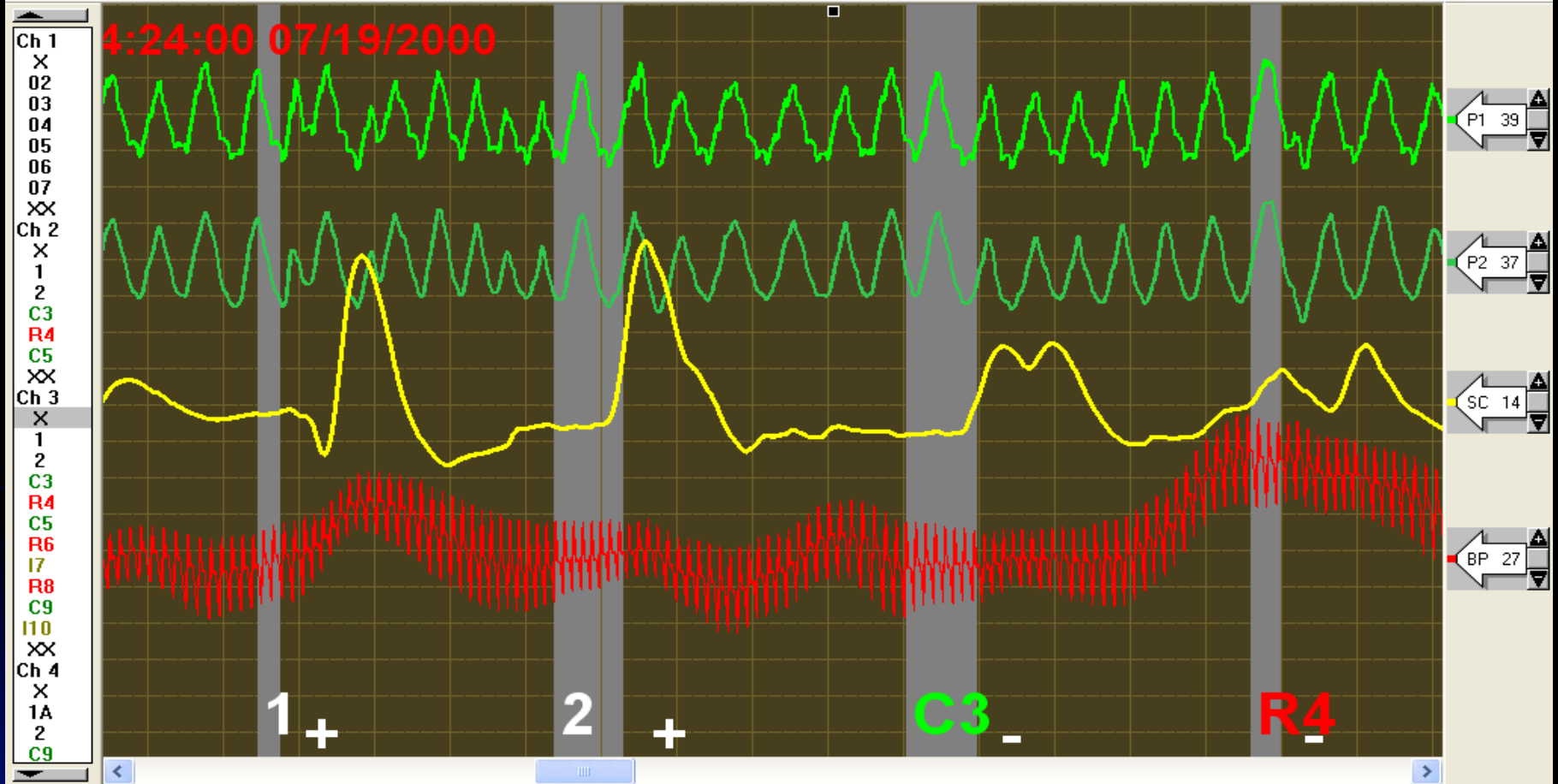




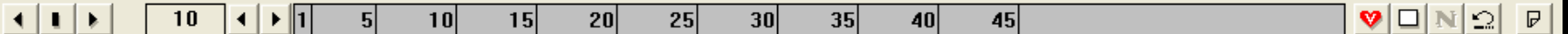
Ch 2







**THE TEST IS ABOUT TO BEGIN, PLEASE REMAIN STILL**



# Subject confessed & gave up manual!



# The examiner holds the key!



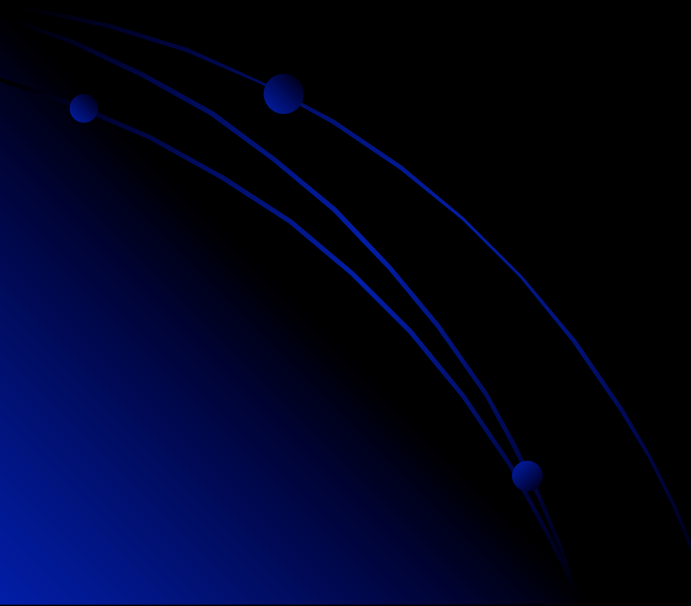
- Competence
  - Proper training
  - Adherence to standards
  - Attend training – keeps up with change
  - Recognize quality & normal physiology
- Professional
  - Appearance
  - Presentation
  - Knowledgeable



# The examiner holds the key!



- Do not get paranoid!



# Final Analysis

- Do it right
  - Keep abreast of training
  - Be conservative
  - Adhere to standards
  - Discussion – Questions?
- 